

COUNTY OF RIVERSIDE

2004

AGRICULTURAL PRODUCTION REPORT



AQUACULTURE IN RIVERSIDE COUNTY

- In 2004, Aquaculture accounted for almost \$16 Million in crop production value, ranking it 14th in crop value in the county. Aquaculture has been in the top 15 crops for the last five years and in the top 20 crops nine of the last ten years.
- In 2004, nine different aquaculture products were produced on farms in Riverside County, most of which are located in the Coachella Valley. These products included: Bass, Carp, Catfish, Goldfish, Hybrid Striped Bass, Ornamental Fish, Prawns, Tilapia, and Trout.
- The value of aquaculture products in Riverside County has increased almost 5 fold during the last 15 years, from 3.4 Million in 1989 to 15.6 Million in 2004.
- According to the 2002 Census of Agriculture (USDA, NASS), Riverside County accounted for 29 % of the total aquaculture production in California, making Riverside County the top county in California, and the 12th top county in the United States.
- According to a draft Preliminary Environmental Impact Report for Inland Aquaculture Projects prepared for the California Department of Fish and Game in 2003, as of April 2000, Riverside County accounted for 19% of all the freshwater aquaculture facilities in California, more than three times as many farms as the next closest county.
- For more details of Aquaculture in Riverside County, see pages 7, 12, and 13 in this report.

Cover Photographs:

Top Left: Hybrid Striped Bass cooling on ice prior to packing

Top Right: Golden Tilapia

Bottom Right: Golden Tilapia tank at feeding time

Bottom Left: Hybrid Striped Bass fingerlings



JOHN SNYDER
Agricultural Commissioner
Sealer of Weights & Measures

OFFICE OF THE
AGRICULTURAL COMMISSIONER

P.O. BOX 1089
RIVERSIDE CA 92502-1089
PHONE (951) 955-3000
FAX (951) 955-3012

WEIGHTS & MEASURES OFFICE
P.O. BOX 1480
RIVERSIDE, CA 92502-1480
PHONE (951) 955-3030
FAX (951) 276-4728

A.G. Kawamura, Secretary
California Department of Food and Agriculture

And

The Honorable Board of Supervisors of Riverside County

Marion Ashley, Chairman, District V

Bob Buster, District I
John Tavaglione, District II

Jeff Stone, District III
Roy Wilson, District IV

I am pleased to submit the 2004 Agricultural Production Report for the acreage, yield, and gross valuation of agricultural crops and livestock in Riverside County.

This year's Agricultural Production Report represents a total gross valuation of \$1,131,605,200, which is an increase of \$64.2 Million (6.0%) from the 2003 gross value. The gross value for agricultural crops was \$815,397,500, an increase of \$35.9 Million (4.6%) from the previous year. The value of livestock and poultry production was \$316,207,700, an increase of \$28.3 Million (9.8%) from the 2003 value.

For the second year in a row, Nursery stock was the top valued crop in the county. Nursery production value increased 2.6% last year to 211.3 Million, while Milk increased 2.3% to 208.8 Million to remain in second. Rounding out the top five crops in the County, Table Grapes decreased 3.1 % (3.6 Million), Eggs decreased 11.9 % (8.8 Million) and Avocados were down 5.8 % (3.5 Million). Of note, Citrus values were up 45.6 % (38.7 Million) last year to account for much of the increase in the overall crop valuation.

It must be emphasized that this report reflects a gross return and in no way represents a measure of profit or loss to the producer. Leading agricultural economists agree that every dollar received by farmers in Riverside County in 2004, has the financial impact of three and a half times that amount. Therefore, \$1,131,605,200 becomes more than \$3,960,618,200 revenue generated into the local economy.

I wish to express my sincere appreciation to the producers, processors, and agencies that have provided the information necessary for the compilation of this report. I would also like to express my gratitude to all the members of my staff for their contribution toward the preparation of this report.

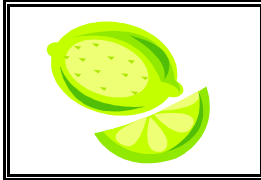
Respectfully submitted,

John Snyder

John Snyder
Agricultural Commissioner/Sealer of Weights & Measures

TABLE OF CONTENTS

CITRUS CROPS	1
TREE AND VINE CROPS	2
VEGETABLE, MELON AND MISCELLANEOUS CROPS	3-5
FIELD AND SEED CROPS	5-6
LIVESTOCK AND POULTRY	7
LIVESTOCK AND POULTRY PRODUCTS	7
AQUACULTURE	7
NURSERY STOCK PRODUCTION	8
APICULTURE	8
SUMMARIES – TOTAL/DISTRICT VALUATIONS, ACREAGE STATISTICS	9
RIVERSIDE COUNTY LEADING AGRICULTURAL VALUATIONS	10
CALIFORNIA’S LEADING AGRICULTURAL VALUATION COUNTIES	10
COUNTY AGRICULTURAL PRODUCTION VALUES 1989-2004	11
AQUACULTURE PRODUCTION VALUATION 1988-2004	12
AQUACULTURE FARM DIVERSITY 2004	12
AQUACULTURE PRODUCTION AND VALUE 1988 TO 2004	13
MILLION DOLLAR COMMODITIES	14
TOTAL AGRICULTURAL PRODUCTION VALUATION 2000-2004	15
PHYTOSANITARY EXPORT CERTIFICATION	16
SUSTAINABLE AGRICULTURE REPORT	17
STAFF MEMBERS	18



CITRUS CROPS

	Year	Planted Acreage	Harvested Acreage	Production		Value		
				Per Acre	Total	Unit	Per Unit	Total
Grapefruit-Ruby	2004	4,684	4,674	995	4,650,630	34 lbs	9.68	45,018,100
By-Products	2004			387	1,808,838		0.61	1,103,400
Grapefruit-Ruby	2003	4,953	4,943	948	4,685,964	34 lbs	5.84	27,366,000
By-Products	2003			281	1,388,983		0.35	486,100
Grapefruit-White	2004	770	770	418	321,860	34 lbs	7.87	2,533,000
By-Products	2004			174	133,980		0.79	105,800
Grapefruit-White	2003	842	842	504	424,368	34 lbs	7.34	3,114,900
By-Products	2003			730	614,660		0.98	602,400
Lemons	2004	6,409	6,039	577	3,484,503	38 lbs	9.91	34,531,400
By-Products	2004			88	531,432		0.36	191,300
Lemons	2003	8,348	8,348	596	4,975,408	38 lbs	5.27	26,220,400
By-Products	2003			58	484,184		0.35	169,500
Miscellaneous*	2004	662	662	666	440,892	37.5 lbs	11.64	5,132,000
By-Products	2004			287	189,994	37.5 lbs	1.60	304,000
Miscellaneous*	2003	630	630	656	413,280	37.5 lbs	11.44	4,727,900
By-Products	2003			13	8,190	37.5 lbs	0.10	800
Oranges-Navel	2004	3,178	3,178	618	1,964,004	37.5 lbs	9.01	17,695,700
By-Products	2004			318	1,010,604		0.32	323,400
Oranges-Navel	2003	3,460	3,460	503	1,740,380	37.5 lbs	5.68	9,885,400
By-Products	2003			351	1,214,460		0.63	765,100
Oranges-Valencia	2004	2,626	2,606	262	682,772	37.5 lbs	8.27	5,646,500
By-Products	2004			381	992,886		1.78	1,767,300
Oranges-Valencia	2003	2,752	2,752	344	946,688	37.5 lbs	4.97	4,705,000
By-Products	2003			311	855,872		1.32	1,129,800
Royal Mandarins	2004	144	102	580	59,160	37.5 lbs	9.75	576,800
By-Products	2004			34	3,468		3.35	11,600
Royal Mandarins	2003	102	102	468	47,736	37.5 lbs	11.41	544,700
By-Products	2003			29	2,958		5.00	14,800
Tangelos	2004	716	546	326	177,996	30 lbs	6.87	1,222,800
By-Products	2004			83	45,318		1.32	59,800
Tangelos	2003	584	569	314	178,666	30 lbs	5.72	1,022,000
By-Products	2003			117	66,573		2.03	135,100
Tangerines	2004	1,678	1,655	589	974,795	25 lbs	6.80	6,628,600
By-Products	2004			236	390,580		1.85	722,600
Tangerines	2003	1,791	1,675	376	629,800	25 lbs	5.56	3,501,700
By-Products	2003			132	221,100		2.30	508,500
TOTAL	2004	20,867	20,232					\$ 123,574,100
	2003	23,462	23,321					84,900,100

* Includes: Grapefruit (Oro Blanco, Rio Red, Star), Oranges (Blood), Kumquats, Limes



TREE AND VINE CROPS

	Year	Planted Acreage	Harvested Acreage	Production		Value		
				Per Acre	Total	Unit	Per Unit	Total
Apples	2004	73		Crop Failure		40 lbs	0.00	-
	2003	68	56	92	5,152	40 lbs	12.80	65,900
Apricots	2004			Misc.				
	2003	15	15	2	30	tons	1,200.00	36,000
Avocados	2004	7,642	7,349	289	2,123,861	26 lbs	26.55	56,388,500
	2003	7,642	7,349	259	1,903,391	26 lbs	31.44	59,842,600
Cherries	2004	26		Crop Failure		18 lbs	0.00	-
	2003	25		Crop Failure		18 lbs	0.00	-
Dates	2003	6,160	4,140	4.63	19,168	tons	2,018.00	38,681,400
Culls	2003			0.40	1,656		68.00	112,600
Dates	2003	5,640	4,140	4.52	18,713	tons	1,950.00	36,490,000
Culls	2003	(Revised)		0.39	1,615		66.00	106,600
Grapes - Table								
Beauty Seedless	2004	189	182	780	141,960	18 lbs	14.71	2,088,200
	2003	223	223	673	150,079	18 lbs	16.53	2,480,800
Exotic	2004	58	58	765	44,370	18 lbs	10.85	481,400
	2003	30	30	637	19,110	18 lbs	11.18	213,600
Flame Seedless	2004	5,366	5,340	820	4,378,800	18 lbs	14.61	63,974,300
	2003	5,274	5,274	753	3,971,322	18 lbs	14.25	56,591,300
Perlette	2004	3,010	2,090	572	1,195,480	18 lbs	17.69	21,148,000
	2003	2,600	2,600	560	1,456,000	18 lbs	13.37	19,466,700
Thompson Seedless	2004	1,800	1,760	545	959,200	18 lbs	13.30	12,757,400
	2003	1,865	1,865	739	1,378,235	18 lbs	15.68	21,610,700
Other Varieties	2004	1,385	1,124	700	786,800	18 lbs	15.16	11,927,900
	2003	1,353	1,353	780	1,055,340	18 lbs	14.76	15,576,800
HARVESTED TABLE GRAPE ACREAGE SUPPLIED BY CALIFORNIA DESERT GRAPE ADMINISTRATIVE COMMITTEE								
Grapes - Wine	2004	1,697	1,640	2.18	3,575	tons	668.00	2,388,200
	2003	1,266	1,176	3.54	4,163	tons	784.00	3,263,800
Jojoba	2004	544	544	203	110,432	1 lbs	1.53	169,000
	2003	150	150	200	30,000	1 lbs	1.35	40,500
Miscellaneous*	2004	304	184	901	165,784	24 lbs	8.88	1,472,200
	2003	440	70	350	24,500	24 lbs	23.50	575,800
Peaches - Freestone	2004	55	55	268	14,740	22 lbs	12.27	180,900
	2003	40	29	240	6,960	22 lbs	12.00	83,500
Pears	2004	21	21	150	3,150	22 lbs	12.00	37,800
	2003	19	19	180	3,420	22 lbs	11.00	37,600
Persimmons	2004	26	26	450	11,700	24 lbs	11.00	128,700
	2003	25	25	371	9,275	24 lbs	9.06	84,000
TOTAL	2004	28,356	24,513				\$	211,936,500
	2003	25,175	24,374					216,566,200

* Includes: Apricots, Figs, Jujubee, Longans, Mangoes, Nectarines, Plums, Walnuts. No Harvest (Lychee, Olives)



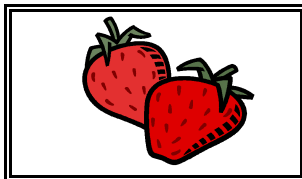
VEGETABLE, MELON & MISCELLANEOUS CROPS

	Year	Harvested Acreage	Production		Unit	Value	
			Per Acre	Total		Per Unit	Total
Artichokes	2004	445	560	249,200	23 lbs	15.24	3,797,800
	2003	671	754	505,934	23 lbs	10.53	5,327,500
Beans-Green	2004	317	378	119,826	28 lbs	21.38	2,561,900
	2003	845	488	412,360	28 lbs	15.76	6,498,800
Broccoli	2004	2,725	614	1,673,150	23 lbs	8.73	14,606,600
	2003	3,154	575	1,813,550	23 lbs	6.48	11,751,800
Cabbage	2004	120	694	83,280	50 lbs	4.97	413,900
	2003	65	753	48,945	50 lbs	4.97	243,300
Carrots	2004	1,416	895	1,267,320	48 lbs	7.70	9,758,400
	2003	1,641	810	1,329,210	48 lbs	6.82	9,065,200
Cauliflower	2004	903	772	697,116	23 lbs	7.35	5,123,800
	2003	928	852	790,656	23 lbs	7.12	5,629,500
Celery	2004	220	1,064	234,080	60 lbs	8.69	2,034,200
	2003	315	871	274,365	60 lbs	7.62	2,090,700
Corn-Sweet	2004	1,851	330	610,830	45 lbs	7.55	4,611,800
	2003	2,102	335	704,170	45 lbs	7.16	5,041,900
Eggplant	2004	179	1,100	196,900	20 lbs	8.50	1,673,700
	2003	208	738	153,504	20 lbs	10.58	1,624,100
Lettuce Head	2004	955	505	482,275	50 lbs	4.80	2,314,900
	2003	1,175	444	521,700	50 lbs	4.88	2,545,900
Head-Shredding, Bulk	2004		None Reported				
	2003		Misc.				
Loose Leaf	2004	1,583	992	1,570,336	22 lbs	8.04	12,625,500
	2003	2,214	948	2,098,872	22 lbs	6.33	13,285,900
Romaine	2004	1,140	934	1,064,760	35 lbs	8.73	9,295,400
	2003	2,067	827	1,709,409	35 lbs	7.16	12,239,400
Melons							
Cantaloupe	2004	1,564	444	694,416	40 lbs	4.93	3,423,500
	2003	2,486	548	1,362,328	40 lbs	6.85	9,331,900
Honeydew	2004	1,897	564	1,069,908	29 lbs	4.47	4,782,500
	2003	1,508	703	1,060,124	29 lbs	5.64	5,979,100



VEGETABLE, MELON & MISCELLANEOUS CROPS

	Year	Harvested Acreage	Production		Unit	Value	
			Per Acre	Total		Per Unit	Total
Melons							
Miscellaneous	2004	585	561	328,185	33 lbs	4.84	1,588,400
	2003	865	510	441,150	33 lbs	6.76	2,982,200
Watermelon	2004	1,274	24	30,576	tons	192.00	5,870,600
	2003	1,681	22	36,982	tons	188.00	6,952,600
By-Products	2004		Misc.				
	2003	3,250	1	2,410	tons	220.00	530,200
Miscellaneous*	2004	1,247	1,307	1,629,829	28 lbs	7.76	12,647,500
	2003	1,406	445	625,670	28 lbs	4.51	2,821,800
Mushrooms	2004		None Reported				
	2003	3	18,330	54,990	1 lbs	2.43	133,600
Okra	2004		None Reported				
	2003	73	397	28,981	20 lbs	14.00	405,700
Onions-Dry	2004		Misc.				
	2003	289	624	180,336	50 lbs	11.00	1,983,700
Oriental Vegetables	2004	1,357	806	1,093,742	28 lbs	13.67	14,951,500
	2003	973	1,124	1,093,652	28 lbs	13.39	14,644,000
Peppers							
Bell	2004	2,520	1,103	2,779,560	30 lbs	15.08	41,915,800
	2003	2,715	1,132	3,073,380	30 lbs	10.80	33,192,500
Chili	2004		None Reported				
	2003		Misc.				
Potatoes							
Fall	2004	1,734	171	296,514	100 lbs	12.03	3,567,100
	2003	1,534	287	440,258	100 lbs	6.55	2,883,700
Spring	2004	515	193	99,395	100 lbs	13.02	1,294,100
	2003	825	258	212,850	100 lbs	17.63	3,752,500
Pumpkins	2004		Misc.				
	2003	179	12	2,148	tons	155.25	333,500
Radishes	2004	24	707	16,968	35 lbs	5.24	88,900
	2003	97	707	68,579	35 lbs	9.45	648,100
Spices	2004		Misc.				
	2003	519	84	43,596	28 lbs	70.00	3,051,700
Spinach	2004	975	951	927,225	30 lbs	9.53	8,836,500
	2003	575	1,091	627,325	30 lbs	8.08	5,068,800



VEGETABLE, MELON & MISCELLANEOUS CROPS

	Year	Harvested Acreage	Production		Unit	Value	
			Per Acre	Total		Per Unit	Total
Squash							
Summer	2004		All				
	2003	286	7	1,988	tons	588.00	1,168,800
Other	2004	171	6.6	1,129	tons	451.00	509,000
	2003		Misc.				
Strawberries	2004	358	1,539	550,962	12 lbs	11.93	6,573,000
	2003	304	1,410	427,935	12 lbs	11.50	4,921,300
Tomatoes	2004		Misc.				
	2003	263	1,675	440,525	20 lbs	6.52	2,872,200
TOTAL	2004	26,075				\$	174,866,300
	2003	35,216					179,001,900

* Includes: Beets, Endive, Escarole, Garlic, Onions-Dry, Other (Riv, CV districts), Parsley, Peas, Pumpkins, Spices, Tomatoes.



FIELD AND SEED CROPS

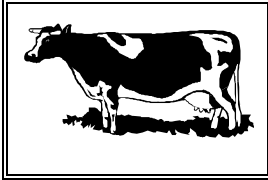
	Year	Harvested Acreage	Production		Unit	Value	
			Per Acre	Total		Per Unit	Total
Cotton							
Short Staple	2004	18,300	3.75	68,625	500 lbs	250.00	17,156,300
	2003	13,139	3.30	43,359	500 lbs	310.00	13,441,200
Seed	2004		1.50	17,343	tons	142.00	2,462,700
	2003		1.32	17,343	tons	130.00	2,254,600
Grain							
Barley	2004		Misc.				
	2003	402	2.33	937	tons	114.00	106,800
Milo Maize	2004		None Reported				
	2003		None Reported				
Oat	2004		None Reported				
	2003	415	0.95	394	tons	92.00	36,300
Wheat	2004	10,967	1.06	11,625	tons	144.00	1,674,000
	2003	26,987	1.84	49,656	tons	140.00	6,951,900
Hay							
Alfalfa	2004	49,622	8.21	407,397	tons	96.00	39,110,100
	2003	55,558	8.70	483,355	tons	80.50	38,910,000
Barley	2004		Misc.				
	2003	2,250	2.06	4,635	tons	107.00	495,900
Bermuda Grass	2004	1,373	7.50	10,298	tons	73.00	751,700
	2003	1,779	5.50	9,785	tons	80.00	782,800



FIELD AND SEED CROPS

	Year	Harvested Acreage	Production		Unit	Value	
			Per Acre	Total		Per Unit	Total
Hay							
Klein Grass	2004	2,579	8.20	21,148	tons	110.00	2,326,300
	2003	2,288	9.50	21,736	tons	87.00	1,891,000
Oat	2004	1,677	1.83	3,069	tons	109.00	334,500
	2003	2,208	2.74	6,050	tons	105.00	635,200
Sudan	2004	2,204	4.70	10,359	tons	130.00	1,346,600
	2003	1,491	5.20	7,753	tons	98.00	759,800
Other	2004	5,000	4.00	20,000	tons	115.00	2,300,000
	2003	1,007	1.80	1,813	tons	38.00	68,900
Timothy Grass	2004		Misc.				
	2003	514	3.70	1,902	tons	200.00	380,400
Miscellaneous*	2004	2,913	2.50	7,283	tons	136.00	990,400
	2003	1,115	1.20	1,338	tons	169.00	226,100
Pasture-Irrigated	2004	13,450		13,450	acres	120.00	1,614,000
	2003	15,550		15,550	acres	122.00	1,897,100
Rangeland	2004	35,000		35,000	acres	5.00	175,000
	2003	40,000		40,000	acres	5.00	200,000
Silage and Green Chop							
Alfalfa	2004	2,015	30.00	60,450	tons	29.00	1,753,100
	2003	1,720	31.70	54,524	tons	28.40	1,548,500
Barley	2004	60	9.80	588	tons	15.50	9,100
	2003	345	4.51	1,556	tons	16.00	24,900
Corn	2004	1,096	28.00	30,688	tons	33.00	1,012,700
	2003	1,488	21.50	31,992	tons	30.20	966,200
Oat	2004	340	17.50	5,950	tons	24.00	142,800
	2003	508	7.00	3,556	tons	16.00	56,900
Sorghum	2004	490	18.00	8,820	tons	25.00	220,500
	2003	305	17.70	5,399	tons	23.00	124,200
Sudan	2004	45	16.00	720	tons	24.00	17,300
	2003	20	20.00	400	tons	15.00	6,000
Wheat	2004	5,658	10.20	57,712	tons	31.00	1,789,100
	2003	6,311	10.30	65,003	tons	21.00	1,365,100
Seed							
Bermuda Grass	2004	95	281.00	26,695	lbs	1.23	32,800
	2003	1,178	314.00	369,892	lbs	1.52	562,200
TOTAL	2004	152,884					\$ 75,219,000
	2003	176,578					73,692,000

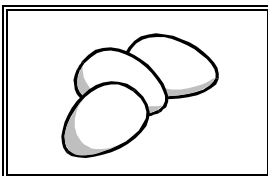
* Includes: Grain - Barley, Hay - Barley, Hay - Timothy Grass.



LIVESTOCK AND POULTRY

Year	Number of Head	Total Liveweight	Unit	Value		
				Per Unit	Total	
Cattle and Calves	2004	66,700	350,240	cwt	76.00	26,618,200
	2003*	2,600	20,100	cwt	38.00	763,800
Sheep and Lambs	2004	74,000	111,930	cwt	79.40	8,887,200
	2003	77,100	96,700	cwt	87.00	8,412,900
Other Livestock**	2004			various		6,128,500
	2003*			various		154,000
TOTAL	2004				\$	41,633,900
	2003					9,330,700

* Under reported. ** Includes Baby Chicks, Ducks, Pheasants



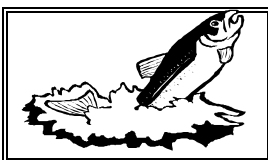
LIVESTOCK AND POULTRY PRODUCTS

Year	Production	Unit	Value		
			Per Unit	Total	
Eggs*	2004	118,624,000	dozen	0.55	65,243,200
	2003	125,532,000	dozen	0.59	74,063,900
Milk**	2004	14,188,150	cwt	14.72	208,849,600
	2003	17,023,245	cwt	11.99	204,108,700
Other Products***	2004				481,000
	2003				405,300
TOTAL	2004			\$	274,573,800
	2003				278,577,900

*Information Supplied by: University of California Cooperative Extension Services.

**Information Supplied by: California Agricultural Statistics Service. Includes Market and Manufactured.

***Includes Wool.



AQUACULTURE

Year	Production	Unit	Value		
			Per Unit	Total	
Carp	2004	Misc.	lbs		
	2003	200,523		2.24	449,200
Catfish	2004	658,000	lbs	1.92	1,263,400
	2003	923,344		1.87	1,726,700
Miscellaneous*	2004	3,804,200	lbs	2.73	10,385,500
	2003	3,828,800		2.73	10,452,600
Tilapia	2004	1,995,000	lbs	1.97	3,930,200
	2003	1,572,914		2.10	3,303,100
Total	2004	6,457,200		\$	15,579,100
	2003	6,525,581			15,931,600

* Includes Bass, Carp, Goldfish, Hybrid Stripped Bass, Ornamental Fish, Prawns, and Trout.



NURSERY STOCK PRODUCTION

	Year	Acres	Production	Unit	Valuation
Ornamental Nursery Stock	2004	3,052	30,090,472	various	134,580,300
	2003	3,582	19,776,153	various	146,039,600
Cut Flowers and Cut Greens	2004	530	8,373,026	cuttings	6,409,900
	2003	353	2,656,100	cuttings	1,649,900
Ground Cover, Liners, Transplants	2004	42	799,336	flats	6,592,200
	2003				
Christmas Trees (cut)	2004	54	7,450	each	272,900
	2003	24	4,522	each	162,700
Turf	2004	3,664	190,408,571	square feet	42,434,100
	2003	3,552	149,615,325	square feet	30,731,100
Farm Planting Stock	2004	172	1,854,940	various	20,981,800
	2003	100	1,862,500	various	27,263,000
TOTAL	2004	7,514			\$211,271,200
	2003	7,611			205,846,300



APICULTURE

	Year	Production	Unit	Value	
				Per Unit	Total
Honey	2004	1,395,000	lbs	1.05	1,464,800
	2003	1,909,200	lbs	1.25	2,386,500
Beeswax	2004	31,000	lbs	1.00	31,000
	2003	31,820	lbs	1.00	31,800
Queen Cells	2004	3,100	queens	1.50	4,700
	2003	3,000	queens	1.50	4,500
Fees Collected for Pollination	2004	27,900	colonies	52.00	1,450,800
	2003	28,700	colonies	38.25	1,097,800
Total Colonies	2004	31,000			
	2003	31,820			
TOTAL	2004				\$ 2,951,300
	2003				3,520,600

DISTRICT VALUATIONS - AGRICULTURAL CROPS

District	2000	2001	2002	2003	2004
Riverside/Corona	31,203,800	49,707,800	84,200,000	97,390,900	103,967,000
San Jacinto/Temecula Valley	102,293,100	138,802,600	145,426,200	164,934,800	182,021,700
Coachella Valley	324,729,300	450,695,100	425,631,400	405,575,900	416,373,900
Palo Verde Valley	93,876,000	99,073,100	93,716,800	91,978,200	96,535,100
Total Crop Valuation	\$552,102,200	\$738,278,600	\$748,974,400	\$759,879,800	\$798,897,700

ACREAGE STATISTICS

Crop	2000	2001	2002	2003	2004
Citrus	30,653	30,011	29,818	23,462	20,867
Tree and Vine	28,405	26,538	28,451	25,175	28,356
Vegetable, Melons, Misc.	45,405	41,738	35,360	35,216	26,075
Field and Seed	163,861	187,045	147,665	176,578	152,884
Total Planted Acreage	268,324	285,332	241,294	260,431	228,182

TOTAL VALUATION - F.O.B.

Crop	2000	2001	2002	2003	2004
Citrus	114,572,900	130,221,100	95,402,300	84,900,100	123,574,100
Tree and Vine	177,390,100	191,579,100	183,138,900	216,566,200	211,936,500
Vegetable, Melons, Misc.	193,720,100	196,785,100	215,412,800	179,001,900	174,866,300
Field and Seed	66,921,500	80,215,900	71,960,400	73,692,000	75,219,000
Nursery	107,520,300	138,371,300	183,073,600	205,846,300	211,271,200
Apiculture	4,269,200	4,740,000	2,803,800	3,520,600	2,951,300
Aquaculture	17,174,700	15,412,400	15,757,600	15,931,600	15,579,100
Total Crop	\$681,568,800	\$757,324,900	\$767,549,400	\$779,458,700	\$815,397,500
Livestock and Poultry	\$366,992,800	\$367,583,500	\$295,928,700	\$287,908,600	\$316,207,700
GRAND TOTAL (\$)	1,048,561,600	1,124,908,400	1,063,478,100	1,067,367,300	1,131,605,200

RIVERSIDE COUNTY LEADING AGRICULTURAL VALUATIONS

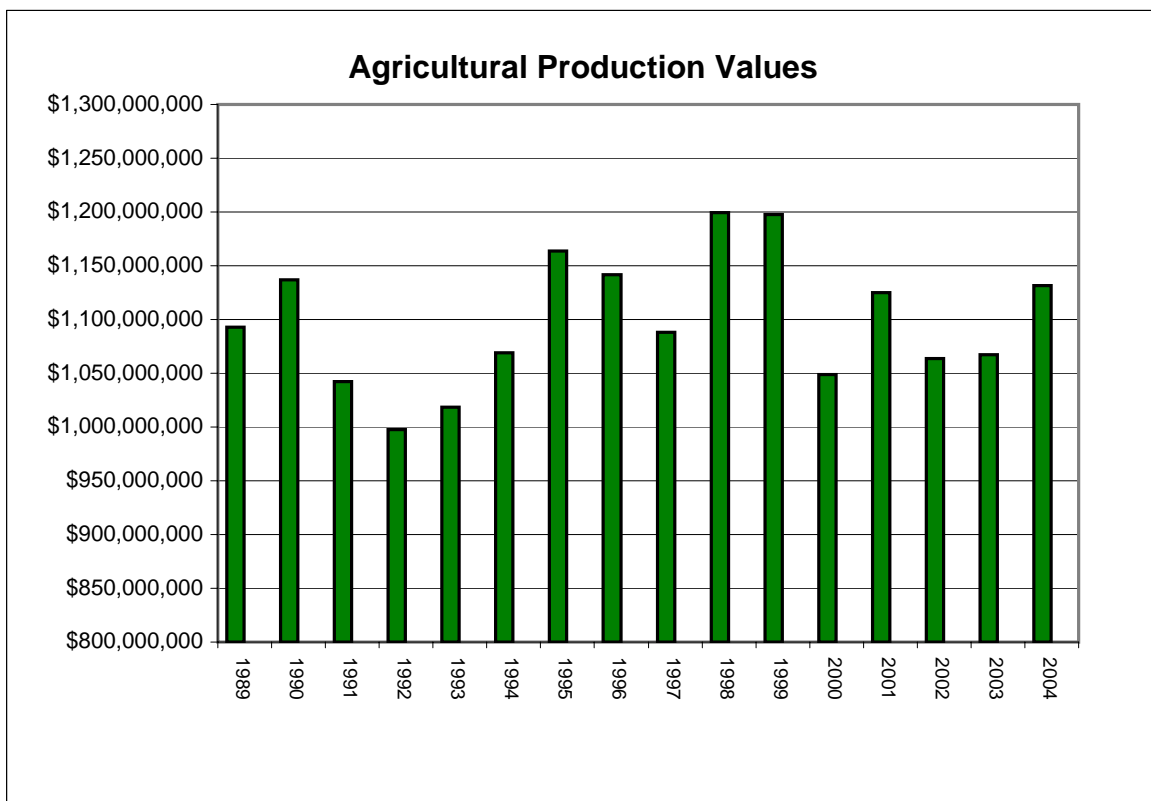
<u>2003</u>		<u>2004</u>		
1	Nursery	\$ 205,846,300	1 Nursery	\$ 211,271,200
2	Milk	204,108,700	2 Milk	208,849,600
3	Grapes, Table	115,939,900	3 Grapes, Table	112,377,200
4	Eggs	74,063,900	4 Eggs	65,243,200
5	Avocados	59,842,600	5 Avocados	56,388,500
6	Hay, all	43,924,000	6 Grapefruit, all	48,760,300
7	Dates	36,596,600	7 Hay, all	46,169,200
8	Peppers, Bell	33,192,500	8 Peppers, Bell	41,915,800
9	Grapefruit, all	31,569,400	9 Dates	38,794,000
10	Lemons	26,389,900	10 Lemons	34,722,700
11	Melons, all	25,776,000	11 Cattle/Calves	26,618,200
12	Aquaculture	15,931,600	12 Cotton, all	19,619,000
13	Cotton, all	15,695,800	13 Oranges, Navel	18,019,100
14	Oriental Vegetables	14,644,000	14 Aquaculture	15,579,100
15	Lettuce, Loose Leaf	13,285,900	15 Oriental Vegetables	14,951,500
16	Lettuce, Romaine	12,239,400	16 Broccoli	14,606,600
17	Broccoli	11,751,800	17 Vegetables, misc.	12,647,500
18	Oranges, Navel	10,650,500	18 Lettuce, Loose Leaf	12,625,500
19	Carrots	9,331,900	19 Carrots	9,758,400
20	Sheep & Lambs	8,412,900	20 Lettuce, Romaine	9,295,400

CALIFORNIA'S LEADING AGRICULTURAL COUNTIES BY TOTAL VALUE OF PRODUCTION

<u>RANK</u>	<u>2001</u>		<u>2002</u>		<u>2003</u>	
	<u>COUNTY</u>	<u>VALUE (\$)</u>	<u>COUNTY</u>	<u>VALUE (\$)</u>	<u>COUNTY</u>	<u>VALUE (\$)</u>
1	Tulare	3,493,010,000	Fresno	3,418,788,000	Fresno	4,052,767,000
2	Fresno	3,218,681,000	Tulare	3,201,722,000	Tulare	3,294,660,000
3	Monterey	2,746,251,000	Monterey	2,812,073,000	Monterey	3,288,468,000
4	Kern	2,254,322,000	Kern	2,586,437,000	Kern	2,477,526,000
5	Merced	1,703,044,000	Merced	1,730,726,000	Merced	1,918,230,000
6	San Joaquin	1,389,889,000	Stanislaus	1,367,971,000	San Joaquin	1,494,693,000
7	Stanislaus	1,353,300,000	San Joaquin	1,343,818,000	Stanislaus	1,454,928,000
8	San Diego	1,289,708,000	San Diego	1,297,280,000	San Diego	1,351,059,000
9	Riverside	1,124,929,000	Imperial	1,224,109,000	Kings	1,136,966,000
10	Ventura	1,053,714,000	Ventura	1,161,139,000	Ventura	1,117,567,000
11			Riverside	1,063,521,000	Imperial	1,073,472,000
12					Riverside	1,067,367,000

RIVERSIDE COUNTY AGRICULTURAL PRODUCTION VALUES 1989-2004

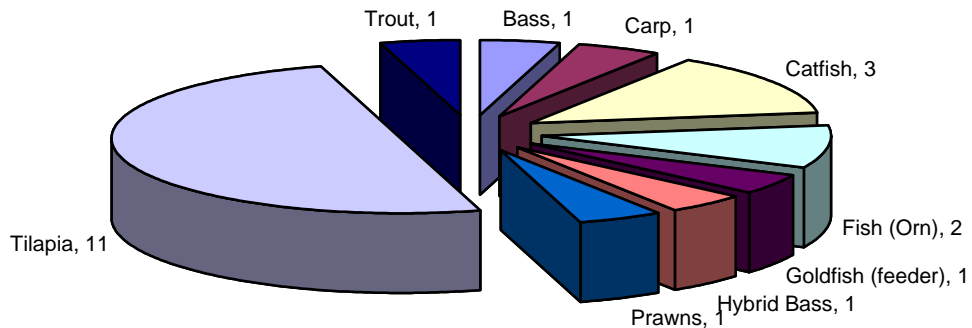
<u>YEAR</u>	<u>VALUE</u>	<u>STATE RANK</u>
1989	\$1,092,781,100	5
1990	\$1,137,174,100	5
1991	\$1,042,326,900	6
1992	\$997,653,500	7
1993	\$1,018,641,000	9
1994	\$1,069,323,000	8
1995	\$1,163,430,300	7
1996	\$1,141,819,800	8
1997	\$1,087,920,000	9
1998	\$1,199,506,700	8
1999	\$1,197,362,000	9
2000	\$1,048,561,600	9
2001	\$1,124,908,400	9
2002	\$1,063,478,000	11
2003	\$1,067,367,300	12
2004	\$1,131,605,200	



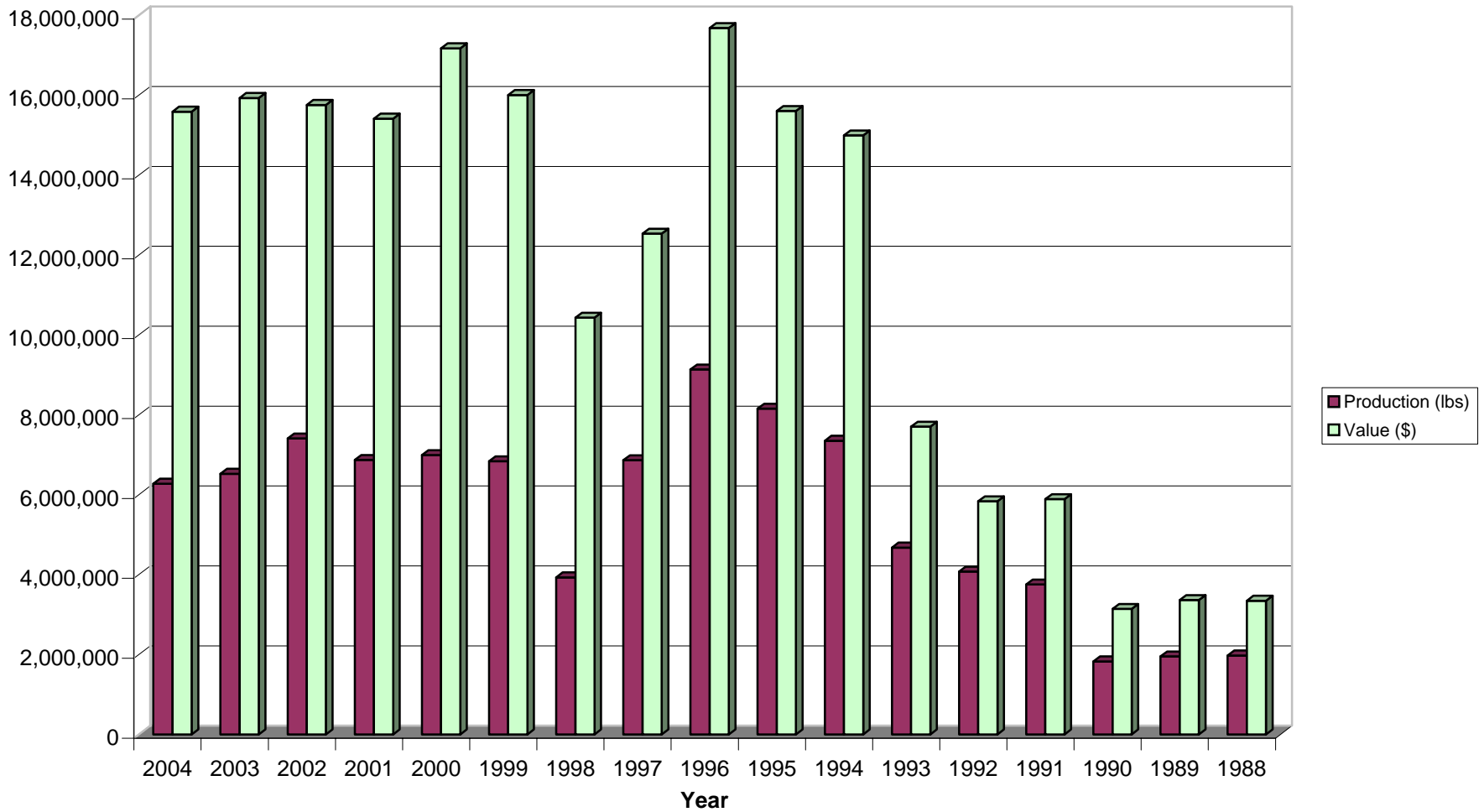
Aquaculture Production Valuation 1988 - 2004

<u>Year</u>	<u>Production (lbs)</u>	<u>Value</u>	<u>Rank within County</u>
2004	6,274,854	\$15,590,200	14
2003	6,525,581	\$15,931,600	12
2002	7,407,983	\$15,757,600	15
2001	6,871,214	\$15,412,400	14
2000	6,990,630	\$17,174,700	13
1999	6,837,114	\$16,006,800	16
1998	3,929,000	\$10,431,000	20+
1997	6,864,800	\$12,535,300	16
1996	9,136,255	\$17,681,900	12
1995	8,153,766	\$15,604,800	14
1994	7,350,881	\$14,995,400	14
1993	4,677,852	\$7,703,100	20+
1992	4,074,974	\$5,837,000	20+
1991	3,751,340	\$5,889,600	22
1990	1,827,000	\$3,139,000	31
1989	1,952,000	\$3,364,000	31
1988	1,975,700	\$3,346,700	33

Aquaculture Farm Diversity - 2004 (Product and # of Farms)



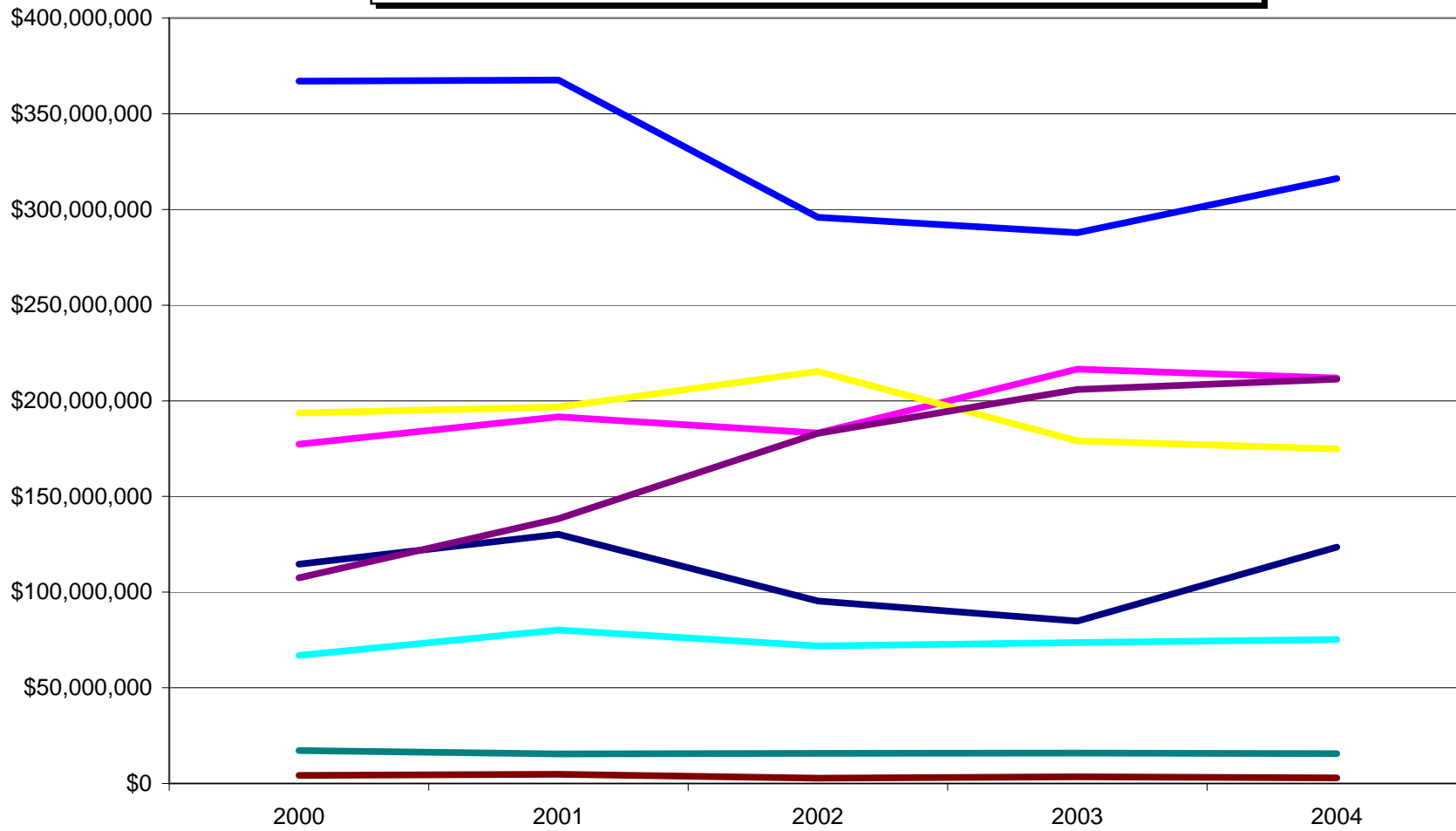
Aquaculture Production and Value 1988 to 2004



2004 Million Dollar Commodities

<u>Rank</u>	<u>Commodity</u>	<u>Value</u>
1	Nursery	\$211,271,200
2	Milk	208,849,600
3	Grapes, Table	112,377,200
4	Eggs	65,243,200
5	Avocados	56,388,500
6	Grapefruit, all	48,760,300
7	Hay, all	46,169,200
8	Peppers, Bell	41,915,800
9	Dates	38,794,000
10	Lemons	34,722,700
11	Cattle/Calves	26,618,200
12	Cotton, all	19,619,000
13	Oranges, Navel	18,019,100
14	Aquaculture	15,579,100
15	Oriental Vegetables	14,951,500
16	Broccoli	14,606,600
17	Vegetable, misc.	12,647,500
18	Lettuce, Loose Leaf	12,625,500
19	Carrots	9,758,400
20	Lettuce, Romaine	9,295,400
21	Tangerines, all	9,222,200
22	Sheep & Lambs	8,887,200
23	Spinach	8,836,500
24	Oranges, Valencia	7,413,800
25	Strawberries	6,573,000
26	Other Livestock	6,128,500
27	Watermelons	5,870,600
28	Citrus, misc.	5,436,000
29	Cauliflower	5,123,800
30	Forage/Fodder, all	4,944,600
31	Potatoes	4,861,200
32	Melons, Honeydew	4,782,500
33	Corn, Sweet	4,611,800
34	Artichokes	3,797,800
35	Melons, Cantaloupe	3,423,500
36	Apiculture	2,951,300
37	Beans, Green	2,561,900
38	Grapes, Wine	2,388,200
39	Lettuce, Head	2,314,900
40	Celery	2,034,200
41	Grain, all	1,674,000
42	Eggplant	1,673,700
43	Pasture, irrigated	1,614,000
44	Melons, misc.	1,588,400
45	Tree/Vine, misc.	1,472,200

Total Agricultural Production Valuation 2000-2004



■ Citrus
 ■ Tree and Vine
 ■ Vegetable, Melons, Misc.
 ■ Field and Seed
 ■ Nursery
 ■ Apiculture
 ■ Aquaculture
 ■ Livestock and Poultry

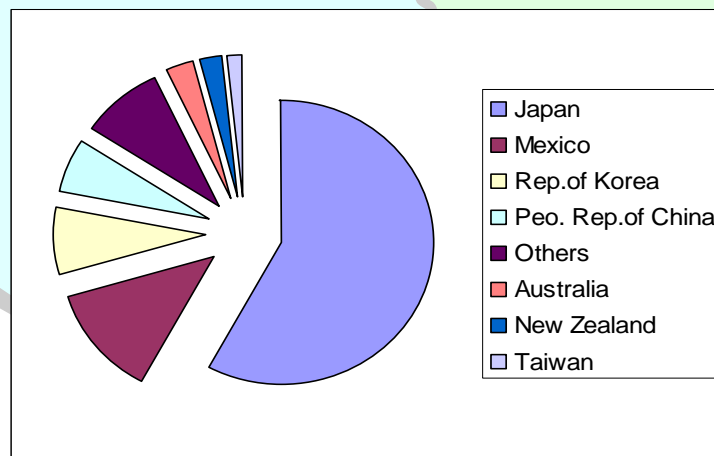
PHYTOSANITARY EXPORT CERTIFICATION – 2004

Export Countries

Australia	Dominican Republic	Italy	Republic of Korea
Austria	Ecuador	Jamaica	Saudi Arabia
Bahamas	El Salvador	Japan	Singapore
Bahrain	France	Lebanon	Spain
Bangladesh	Germany	Malaysia	Sri Lanka
Belgium	Ghana	Mexico	Switzerland
Brazil	Greece	Morocco	Taiwan
Burkina Faso	Guatemala	New Zealand	Thailand
Canada	Honduras	Oman	United Arab Emirates
Chile	Hong Kong	Panama	United Kingdom
Colombia	India	People's Rep. of China	Vietnam
Costa Rica	Indonesia	Philippines	

Commodities Certified

Artichokes	Celery	Cucumbers	Onion Seed
Avocado Budwood	Celery Seedlings	Date Palm Offshoots	Peppers
Avocados	Cilantro	Dates	Watermelons
Bean Seed	Citrus Budwood	Grapes	White Fir Logs
Broccoli	Citrus Fruit	Grass	Wood Pellets
Cantaloupes	Citrus Leaves	Hay	
Carrots	Citrus Seeds	Lettuce	
Cauliflower	Corn, Sweet	Mangos	
Cauliflower Seedlings	Cottonseed	Nursery Stock	



SUSTAINABLE AGRICULTURE

ORGANIC FARMING

82 Organic producers registered in Riverside County.

PEST DETECTION (Commercial and Urban)

<u>Activity</u>	<u>Hours</u>
Commercial Crops	236.5
Public Contact	82.0
Special Surveys:	
Tristeza (Residential)	1.0
Citrus Leaf Miner	0
Scientific Evaluation Trapping	1136.0
Red Imported Fire Ant	0
Citrus Tristeza Indexing (Coachella Valley)	<u>Numbers</u>
Commercial	
Properties tested	6
Acres sampled	173.5
Samples tested biochemically	907
“Positive” samples	0
Residential	
Properties tested	0
Trees surveyed	0
Samples tested biochemically	0
“Positive” samples	0

PEST DETECTION (Exotic Insects)

<u>Pest</u>	<u>Trap Servicings</u>
European Corn Borer	162
Gypsy Moth	76
Khapra Beetle	112
Medfly (Grapes, Citrus)	3,271

PEST EXCLUSION (Incoming plant shipments)

<u>Units profiled</u>	<u>Units inspected</u>	<u>Rejections</u>
1,128	987	13

PEST ABATEMENT

<u>Pest</u>	<u>Properties</u>
California Red Scale	1
Sting Nematode	8
Citrus Tristeza Virus	0
Glassy-winged sharpshooter	0
Abandoned vineyard	0

BIOLOGICAL CONTROL OF WEEDS

<u>Pest</u>	<u>Control Agent</u>
Yellow starthistle	<i>Bangasternus orientalis</i> <i>Eustenopus villosus</i>

BIOLOGICAL CONTROL OF INSECTS AND SNAILS

<u>Pest</u>	<u>Control Agent</u>
Black scale	<i>Metaphycus elvulus</i>
Brown soft scale	<i>Metaphycus uteolus</i>
California red scale	<i>Aphytis melinus</i>
Citrus mealybug	<i>Cryptolaemus montrouzieri</i>
Cottoncushion scale	<i>Encarsia sp.</i> <i>Cryptochaetum iceryae</i>
Eucalyptus longhorned borer	<i>Avetianella longoi</i> <i>Jarra phoracantha</i> <i>Syngaster lepidus</i>
Mosquitoes	<i>Aedes vexans</i> <i>Culex quinquefasciatus</i> <i>Bacillus thur. israelensis</i> <i>Culex tarsalis</i> <i>Gambusia affinis</i> <i>Psorophora columbiae</i> <i>Psytalia concolor</i>
Olive Fruit fly	<i>Galendromus annectens</i>
Persea mite	<i>Galendromus helveolus</i> <i>Galendromus pilosus</i> <i>Psyllaephagus bliteus</i>
Red gum lerp psyllid	<i>Phytoseiulus persimilis</i>
Two spotted spider mite	<i>Galendromus occidentalis</i> <i>Cryptolaemus montrouzieri</i>
Vine mealybug	<i>Ametadoria harrisinae</i>
Western grapeleaf skeletonizer	<i>Apanteles harrisinae</i>
Woolly whitefly	<i>Amitus spiniferus</i> <i>Cales noacki</i>
Brown garden snail	<i>Rumina decollata</i>

OTHER

Enforcement of County Ordinances to control Lettuce Mosaic Virus, agricultural grading, land application of manure and biosolids, cotton plowdown, blowing dust, and beekeeping.

STAFF MEMBERS – 2004

Agricultural Commissioner/Sealer of Weights and Measures

John Snyder

Assistant Agricultural Commissioner/Sealer of Weights and Measures

Dustin Wiley

Deputy Agricultural Commissioners/Sealers

Angela Godwin

Bill Oesterlein

Robert Mulherin

Bill Tracy

Supervising Agricultural & Standards Investigators

Don Domenigoni

Sue Weber

Keith Selnick

Agricultural & Standards Investigators

Rick Allert
Jennifer Chandler
Delia Cioc
Dia Elseewi
Tom Finan
Julius Francisco
Erin Freeman
Dean Gottlieb
Gabriel Gowman

Charles Hardesty
Tom Hought
Charles Kregl
Michael Lahti
Stuart Lease
Arturo Lomeli
Harry Loukatos
Debbie May
Dennis Miller

Victor Miranda
Keith Selnick
Richard Shaffer
Hugo Soto
Michele Tracy
Lily Vargas
Tom Vizthum
Lena Wages

Weights and Measures Inspector

Doug Simmons

Agricultural Inspectors

Steve Bennett

Mike Dishman

Clerical Support Staff

Camille Alexen
Debbie Boyer
Elisa Monteil
Cynthia Ramos

Billie Seale
Johanna Starks
Patrice Wyatt

RIVERSIDE COUNTY AGRICULTURAL
COMMISSIONER'S OFFICE
4080 LEMON STREET, ROOM 19
PO BOX 1089
RIVERSIDE, CA 92502-1089