



JOHN SNYDER  
Agricultural Commissioner  
Sealer of Weights & Measures

OFFICE OF THE  
AGRICULTURAL COMMISSIONER

P.O. BOX 1089  
RIVERSIDE CA 92502-1089  
PHONE (909) 955-3000  
FAX (909) 955-3012

WEIGHTS & MEASURES OFFICE  
P.O. BOX 1480  
RIVERSIDE CA 92502-1480  
PHONE (909) 955-3030  
FAX (909) 276-4728

A.G. Kawamura, Secretary  
California Department of Food and Agriculture

And

The Honorable Board of Supervisors of Riverside County

Roy Wilson, Chairman, District IV

Bob Buster, District I  
John Tavaglione, District II

Jim Venable, District III  
Marion Ashley, District V

I am pleased to submit the 2003 Agricultural Production Report for the acreage, yield, and gross valuation of agricultural crops and livestock in Riverside County.

This year's Agricultural Production Report represents a total gross valuation of \$1,067,367,300, which is an increase of \$3,889,200 (.4%) from the 2002 gross value. The gross value for agricultural crops was \$779,458,700, an increase of \$11,909,300 (1.5%) from the previous year. The value of livestock and poultry production was \$287,908,600, a decrease of \$8,020,100 (2.7%) from the 2002 value.

Significant for 2003 was Nursery stock production replacing Milk as the top crop valuation in the county. Nursery production value increased 12% last year to 205.8 Million, while Milk was down 10.4% to 204.1 Million. Other valuation changes included: Eggs up 22.3%, Avocados up 64.3%, Cotton up 52.1%, Table Grapes up 11.7%, Vegetables down 17% and Alfalfa down 17.4%.

It must be emphasized that this report reflects a gross return and in no way represents a measure of profit or loss to the producer. Leading agricultural economists agree that every dollar received by farmers in Riverside County in 2003, has the financial impact of three times that amount. Therefore, \$1,067,367,300 becomes more than \$3,202,101,900 revenue generated into the local economy.

I wish to express my sincere appreciation to the producers, processors, and agencies that have provided the information necessary for the compilation of this report. I would also like to express my gratitude to all the members of my staff for their contribution toward the preparation of this report.

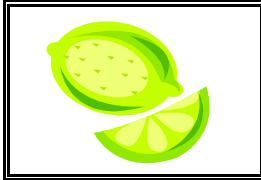
Respectfully submitted,

*John Snyder*

John Snyder  
Agricultural Commissioner/  
Sealer of Weights & Measures

# TABLE OF CONTENTS

CITRUS CROPS	1
TREE AND VINE CROPS	2
VEGETABLE, MELON AND MISCELLANEOUS CROPS	3-5
FIELD AND SEED CROPS	5-6
LIVESTOCK AND POULTRY	7
LIVESTOCK AND POULTRY PRODUCTS	7
AQUACULTURE	7
NURSERY STOCK PRODUCTION	8
APICULTURE	8
SUMMARIES – TOTAL/DISTRICT VALUATIONS, ACREAGE STATISTICS	9
RIVERSIDE COUNTY LEADING AGRICULTURAL VALUATIONS	10
CALIFORNIA’S LEADING AGRICULTURAL VALUATION COUNTIES	10
COUNTY AGRICULTURAL PRODUCTION VALUES 1988-2003	11
NURSERY PRODUCTION VALUATION 1988-2003	12
MILLION DOLLAR COMMODITIES	13
CONTRIBUTION OF NURSERY PRODUCTION 1999-2003	14
TOTAL AGRICULTURAL PRODUCTION VALUATION 1999-2003	15
PHYTOSANITARY EXPORT CERTIFICATION	16
SUSTAINABLE AGRICULTURE REPORT	17
STAFF MEMBERS	18



## CITRUS CROPS

	Year	Planted Acreage	Harvested Acreage	Production		Value		
				Per Acre	Total	Unit	Per Unit	Total
<b>Grapefruit-Ruby</b>	<b>2003</b>	<b>4,953</b>	<b>4,943</b>	<b>948</b>	<b>4,685,964</b>	<b>34 lbs</b>	<b>5.84</b>	<b>27,366,000</b>
<b>By-Products</b>	<b>2003</b>			<b>281</b>	<b>1,388,983</b>		<b>0.35</b>	<b>486,100</b>
Grapefruit-Ruby	2002	5,269	4,931	696	3,431,976	34 lbs	6.40	21,964,600
By-Products	2002			225	1,109,475		0.11	122,000
<b>Grapefruit-White</b>	<b>2003</b>	<b>842</b>	<b>842</b>	<b>504</b>	<b>424,368</b>	<b>34 lbs</b>	<b>7.34</b>	<b>3,114,900</b>
<b>By-Products</b>	<b>2003</b>			<b>730</b>	<b>614,660</b>		<b>0.98</b>	<b>602,400</b>
Grapefruit-White	2002	1,746	1,528	419	640,232	34 lbs	5.18	3,316,400
By-Products	2002			222	339,216		0.30	101,800
<b>Lemons</b>	<b>2003</b>	<b>8,348</b>	<b>8,348</b>	<b>596</b>	<b>4,975,408</b>	<b>38 lbs</b>	<b>5.27</b>	<b>26,220,400</b>
<b>By-Products</b>	<b>2003</b>			<b>58</b>	<b>484,184</b>		<b>0.35</b>	<b>169,500</b>
Lemons	2002	7,694	7,049	428	3,016,972	38 lbs	10.39	31,346,300
By-Products	2002			168	1,184,232		0.51	604,000
<b>Miscellaneous*</b>	<b>2003</b>	<b>630</b>	<b>630</b>	<b>656</b>	<b>413,280</b>	<b>37.5 lbs</b>	<b>11.44</b>	<b>4,727,900</b>
<b>By-Products</b>	<b>2003</b>			<b>13</b>	<b>8,190</b>	<b>37.5 lbs</b>	<b>0.10</b>	<b>800</b>
Miscellaneous**	2002	96	96	392	37,632	37.5 lbs	17.60	662,100
By-Products	2002					37.5 lbs		
<b>Oranges-Navel</b>	<b>2003</b>	<b>3,460</b>	<b>3,460</b>	<b>503</b>	<b>1,740,380</b>	<b>37.5 lbs</b>	<b>5.68</b>	<b>9,885,400</b>
<b>By-Products</b>	<b>2003</b>			<b>351</b>	<b>1,214,460</b>		<b>0.63</b>	<b>765,100</b>
Oranges-Navel	2002	5,919	3,793	461	1,748,573	37.5 lbs	9.72	16,996,100
By-Products	2002			283	1,073,419		0.30	322,000
<b>Oranges-Valencia</b>	<b>2003</b>	<b>2,752</b>	<b>2,752</b>	<b>344</b>	<b>946,688</b>	<b>37.5 lbs</b>	<b>4.97</b>	<b>4,705,000</b>
<b>By-Products</b>	<b>2003</b>			<b>311</b>	<b>855,872</b>		<b>1.32</b>	<b>1,129,800</b>
Oranges-Valencia	2002	6,582	3,758	311	1,168,738	37.5 lbs	8.20	9,583,700
By-Products	2002			331	1,243,898		0.85	1,057,300
<b>Royal Mandarins</b>	<b>2003</b>	<b>102</b>	<b>102</b>	<b>468</b>	<b>47,736</b>	<b>37.5 lbs</b>	<b>11.41</b>	<b>544,700</b>
<b>By-Products</b>	<b>2003</b>			<b>29</b>	<b>2,958</b>		<b>5.00</b>	<b>14,800</b>
Royal Mandarins	2002	300	300	402	120,600	37.5 lbs	6.08	733,200
By-Products	2002			173	51,900		0.33	17,100
<b>Tangelos</b>	<b>2003</b>	<b>584</b>	<b>569</b>	<b>314</b>	<b>178,666</b>	<b>30 lbs</b>	<b>5.72</b>	<b>1,022,000</b>
<b>By-Products</b>	<b>2003</b>			<b>117</b>	<b>66,573</b>		<b>2.03</b>	<b>135,100</b>
Tangelos	2002	704	319	307	97,933	30 lbs	7.93	776,600
By-Products	2002			27	8,613		0.34	2,900
<b>Tangerines</b>	<b>2003</b>	<b>1,791</b>	<b>1,675</b>	<b>376</b>	<b>629,800</b>	<b>25 lbs</b>	<b>5.56</b>	<b>3,501,700</b>
<b>By-Products</b>	<b>2003</b>			<b>132</b>	<b>221,100</b>		<b>2.30</b>	<b>508,500</b>
Tangerines	2002	1,508	1,390	652	906,280	25 lbs	8.29	7,513,100
By-Products	2002			291	404,490		0.70	283,100
<b>TOTAL</b>	<b>2003</b>	<b>23,462</b>	<b>23,321</b>					<b>\$ 84,900,100</b>
	2002	29,818	23,164					95,402,300

\* Includes: Grapefruit (Oro Blanco, Rio Red, Star), Oranges (Blood), Kumquats, Limes

\*\* Includes: Kumquats, Limes



## TREE AND VINE CROPS

	Year	Planted Acreage	Harvested Acreage	Production		Value		
				Per Acre	Total	Unit	Per Unit	Total
<b>Apples</b>	<b>2003</b>	<b>68</b>	<b>56</b>	<b>92</b>	<b>5,152</b>	<b>40 lbs</b>	<b>12.80</b>	<b>65,900</b>
	2002	67	67	85	5,695		11.47	65,300
<b>Apricots</b>	<b>2003</b>	<b>15</b>	<b>15</b>	<b>2</b>	<b>30</b>	<b>tons</b>	<b>1,200.00</b>	<b>36,000</b>
	2002	Miscellaneous						
<b>Avocados</b>	<b>2003</b>	<b>7,642</b>	<b>7,349</b>	<b>259</b>	<b>1,903,391</b>	<b>26 lbs</b>	<b>31.44</b>	<b>59,842,600</b>
	2002	7,785	7,199	200	1,439,800		25.30	36,426,900
<b>Cherries</b>	<b>2003</b>	<b>25</b>	<b>0</b>	<b>Crop Failure</b>		<b>18 lbs</b>	<b>0.00</b>	<b>-</b>
	2002	31	27	80	2,160		36.00	77,800
<b>Dates</b>	<b>2003</b>	<b>4,140</b>	<b>4,140</b>	<b>4.52</b>	<b>18,713</b>	<b>tons</b>	<b>1,950.00</b>	<b>36,490,000</b>
<b>Culls</b>	<b>2003</b>			<b>0.39</b>	<b>1,615</b>		<b>66.00</b>	<b>106,600</b>
Dates	2002	5,940	3,440	4.14	14,242	tons	2,633.00	37,499,200
Culls	2002			0.36	1,238		66.00	81,700
<b>Grapes - Table</b>								
<b>Beauty Seedless</b>	<b>2003</b>	<b>223</b>	<b>223</b>	<b>673</b>	<b>150,079</b>	<b>18 lbs</b>	<b>16.53</b>	<b>2,480,800</b>
	2002	253	253	585	148,005		15.02	2,223,000
<b>Exotic</b>	<b>2003</b>	<b>30</b>	<b>30</b>	<b>637</b>	<b>19,110</b>	<b>18 lbs</b>	<b>11.18</b>	<b>213,600</b>
	2002	67	67	799	53,533		15.73	842,100
<b>Flame Seedless</b>	<b>2003</b>	<b>5,274</b>	<b>5,274</b>	<b>753</b>	<b>3,971,322</b>	<b>18 lbs</b>	<b>14.25</b>	<b>56,591,300</b>
	2002	5,883	5,883	675	3,971,025		12.87	51,107,100
<b>Perlette</b>	<b>2003</b>	<b>2,600</b>	<b>2,600</b>	<b>560</b>	<b>1,456,000</b>	<b>18 lbs</b>	<b>13.37</b>	<b>19,466,700</b>
	2002	3,081	3,081	516	1,589,796		12.19	19,379,600
<b>Thompson Seedless</b>	<b>2003</b>	<b>1,865</b>	<b>1,865</b>	<b>739</b>	<b>1,378,235</b>	<b>18 lbs</b>	<b>15.68</b>	<b>21,610,700</b>
	2002	1,860	1,860	638	1,186,680		14.52	17,230,600
<b>Other Varieties</b>	<b>2003</b>	<b>1,353</b>	<b>1,353</b>	<b>780</b>	<b>1,055,340</b>	<b>18 lbs</b>	<b>14.76</b>	<b>15,576,800</b>
	2002	1,415	1,415	652	922,580		14.15	13,054,500
HARVESTED TABLE GRAPE ACREAGE SUPPLIED BY CALIFORNIA DESERT GRAPE ADMINISTRATIVE COMMITTEE								
<b>Grapes - Wine</b>	<b>2003</b>	<b>1,266</b>	<b>1,176</b>	<b>3.54</b>	<b>4,163</b>	<b>tons</b>	<b>784.00</b>	<b>3,263,800</b>
	2002	1,288	1,250	4.16	5,200		676.54	3,518,000
<b>Jojoba</b>	<b>2003</b>	<b>150</b>	<b>150</b>	<b>200.00</b>	<b>30,000</b>	<b>1 lbs</b>	<b>1.35</b>	<b>40,500</b>
	2002	Miscellaneous						
<b>Miscellaneous*</b>	<b>2003</b>	<b>440</b>	<b>70</b>	<b>350</b>	<b>24,500</b>	<b>24 lbs</b>	<b>23.50</b>	<b>575,800</b>
	2002	686	465	158	73,470		18.79	1,380,500
<b>Peaches - Freestone</b>	<b>2003</b>	<b>40</b>	<b>29</b>	<b>240</b>	<b>6,960</b>	<b>22 lbs</b>	<b>12.00</b>	<b>83,500</b>
	2002	56	53	223	11,819		10.31	121,900
<b>Pears</b>	<b>2003</b>	<b>19</b>	<b>19</b>	<b>180</b>	<b>3,420</b>	<b>22 lbs</b>	<b>11.00</b>	<b>37,600</b>
	2002	Miscellaneous						
<b>Persimmons</b>	<b>2003</b>	<b>25</b>	<b>25</b>	<b>371</b>	<b>9,275</b>	<b>24 lbs</b>	<b>9.06</b>	<b>84,000</b>
	2002	39	39	383	14,937		8.75	130,700
<b>TOTAL</b>	<b>2003</b>	<b>25,175</b>	<b>24,374</b>				<b>\$</b>	<b>216,566,200</b>
	2002	28,451	25,099					183,138,900

\* Includes: Jujubee, Mangoes, Nectarines, Plums, Walnuts. No Harvest (Figs, Olives)



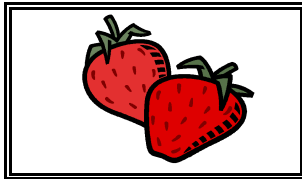
## VEGETABLE, MELON & MISCELLANEOUS CROPS

	Year	Harvested Acreage	Production		Unit	Value	
			Per Acre	Total		Per Unit	Total
<b>Artichokes</b>	<b>2003</b>	<b>671</b>	<b>754</b>	<b>505,934</b>	<b>23 lbs</b>	<b>10.53</b>	<b>5,327,500</b>
	2002	798	594	474,012		9.65	4,574,200
<b>Beans-Green</b>	<b>2003</b>	<b>845</b>	<b>488</b>	<b>412,360</b>	<b>28 lbs</b>	<b>15.76</b>	<b>6,498,800</b>
	2002	464	364	168,896		15.93	2,690,500
<b>Broccoli</b>	<b>2003</b>	<b>3,154</b>	<b>575</b>	<b>1,813,550</b>	<b>23 lbs</b>	<b>6.48</b>	<b>11,751,800</b>
	2002	2,815	545	1,534,175		9.22	14,145,100
<b>Cabbage</b>	<b>2003</b>	<b>65</b>	<b>753</b>	<b>48,945</b>	<b>50 lbs</b>	<b>4.97</b>	<b>243,300</b>
	2002	295	547	161,365		4.69	756,800
<b>Carrots</b>	<b>2003</b>	<b>1,641</b>	<b>810</b>	<b>1,329,210</b>	<b>48 lbs</b>	<b>6.82</b>	<b>9,065,200</b>
	2002	2,763	1,058	2,923,254		5.46	15,961,000
<b>Cauliflower</b>	<b>2003</b>	<b>928</b>	<b>852</b>	<b>790,656</b>	<b>23 lbs</b>	<b>7.12</b>	<b>5,629,500</b>
	2002	872	830	723,760		9.32	6,745,400
<b>Celery</b>	<b>2003</b>	<b>315</b>	<b>871</b>	<b>274,365</b>	<b>60 lbs</b>	<b>7.62</b>	<b>2,090,700</b>
	2002	343	1,224	419,832		7.33	3,077,400
<b>Corn-Sweet</b>	<b>2003</b>	<b>2,102</b>	<b>335</b>	<b>704,170</b>	<b>45 lbs</b>	<b>7.16</b>	<b>5,041,900</b>
	2002	2,004	325	651,300		6.82	4,441,900
<b>Eggplant</b>	<b>2003</b>	<b>208</b>	<b>738</b>	<b>153,504</b>	<b>20 lbs</b>	<b>10.58</b>	<b>1,624,100</b>
	2002	190	1,051	199,690		8.29	1,655,400
<b>Lettuce Head</b>	<b>2003</b>	<b>1,175</b>	<b>444</b>	<b>521,700</b>	<b>50 lbs</b>	<b>4.88</b>	<b>2,545,900</b>
	2002	1,178	442	520,676		7.56	3,936,300
<b>Head-Shredding, Bulk</b>	<b>2003</b>		<b>Misc.</b>				
	2002	1,176	7.70	9,055		88.00	796,800
<b>Loose Leaf</b>	<b>2003</b>	<b>2,214</b>	<b>948</b>	<b>2,098,872</b>	<b>22 lbs</b>	<b>6.33</b>	<b>13,285,900</b>
	2002	2,368	1,065	2,521,920		10.48	26,429,700
<b>Romaine</b>	<b>2003</b>	<b>2,067</b>	<b>827</b>	<b>1,709,409</b>	<b>35 lbs</b>	<b>7.16</b>	<b>12,239,400</b>
	2002	1,741	897	1,561,677		10.83	16,913,000
<b>Melons Cantaloupe</b>	<b>2003</b>	<b>2,486</b>	<b>548</b>	<b>1,362,328</b>	<b>40 lbs</b>	<b>6.85</b>	<b>9,331,900</b>
	2002	3,015	474	1,429,110		5.57	7,960,100
<b>Honeydew</b>	<b>2003</b>	<b>1,508</b>	<b>703</b>	<b>1,060,124</b>	<b>29 lbs</b>	<b>5.64</b>	<b>5,979,100</b>
	2002	1,235	660	815,100		4.72	3,847,300



## VEGETABLE, MELON & MISCELLANEOUS CROPS

	Year	Harvested Acreage	Production		Unit	Value	
			Per Acre	Total		Per Unit	Total
<b>Melons</b>							
<b>Miscellaneous</b>	<b>2003</b>	<b>865</b>	<b>510</b>	<b>441,150</b>	<b>33 lbs</b>	<b>6.76</b>	<b>2,982,200</b>
	2002	1,231	366	450,546		6.55	2,951,100
<b>Watermelon</b>	<b>2003</b>	<b>1,681</b>	<b>22</b>	<b>36,982</b>	<b>tons</b>	<b>188.00</b>	<b>6,952,600</b>
	2002	1,874	27	51,160		234.22	11,982,700
<b>By-Products</b>	<b>2003</b>	<b>3,250</b>	<b>1</b>	<b>2,410</b>	<b>tons</b>	<b>220.00</b>	<b>530,200</b>
<b>Miscellaneous*</b>	<b>2003</b>	<b>1,406</b>	<b>445</b>	<b>625,670</b>	<b>28 lbs</b>	<b>4.51</b>	<b>2,821,800</b>
	2002	1,493	580	865,940		8.88	7,689,500
<b>Mushrooms</b>	<b>2003</b>	<b>3</b>	<b>18,330</b>	<b>54,990</b>	<b>1 lbs</b>	<b>2.43</b>	<b>133,600</b>
<b>Okra</b>	<b>2003</b>	<b>73</b>	<b>397</b>	<b>28,981</b>	<b>20 lbs</b>	<b>14.00</b>	<b>405,700</b>
	2002	163	786	128,118		10.00	1,281,200
<b>Onions-Dry</b>	<b>2003</b>	<b>289</b>	<b>624</b>	<b>180,336</b>	<b>50 lbs</b>	<b>11.00</b>	<b>1,983,700</b>
	2002	553	1,043	576,779		6.14	3,541,400
<b>Oriental Vegetables</b>	<b>2003</b>	<b>973</b>	<b>1,124</b>	<b>1,093,652</b>	<b>28 lbs</b>	<b>13.39</b>	<b>14,644,000</b>
	2002	1,343	1,066	1,431,638		9.41	13,471,700
<b>Peppers</b>							
<b>Bell</b>	<b>2003</b>	<b>2,715</b>	<b>1,132</b>	<b>3,073,380</b>	<b>30 lbs</b>	<b>10.80</b>	<b>33,192,500</b>
	2002	2,402	1,261	3,028,922		9.97	30,198,400
<b>Chili</b>	<b>2003</b>		<b>Misc.</b>				
	2002	95	1,681	159,695		2.25	359,300
<b>Potatoes</b>							
<b>Fall</b>	<b>2003</b>	<b>1,534</b>	<b>287</b>	<b>440,258</b>	<b>100 lbs</b>	<b>6.55</b>	<b>2,883,700</b>
	2002	982	298	292,636		14.94	4,372,000
<b>Spring</b>	<b>2003</b>	<b>825</b>	<b>258</b>	<b>212,850</b>	<b>100 lbs</b>	<b>17.63</b>	<b>3,752,500</b>
	2002	1,692	265	448,380		16.51	7,402,800
<b>Pumpkins</b>	<b>2003</b>	<b>179</b>	<b>12</b>	<b>2,148</b>	<b>tons</b>	<b>155.25</b>	<b>333,500</b>
	2002	187	15	2,880		158.41	456,200
<b>Radishes</b>	<b>2003</b>	<b>97</b>	<b>707</b>	<b>68,579</b>	<b>35 lbs</b>	<b>9.45</b>	<b>648,100</b>
	2002		Misc.				
<b>Spices</b>	<b>2003</b>	<b>519</b>	<b>84</b>	<b>43,596</b>	<b>28 lbs</b>	<b>70.00</b>	<b>3,051,700</b>
	2002		Misc.				
<b>Spinach</b>	<b>2003</b>	<b>575</b>	<b>1,091</b>	<b>627,325</b>	<b>30 lbs</b>	<b>8.08</b>	<b>5,068,800</b>
	2002	1,125	1,100	1,237,500		7.93	9,813,400



## VEGETABLE, MELON & MISCELLANEOUS CROPS

	Year	Harvested Acreage	Production		Unit	Value	
			Per Acre	Total		Per Unit	Total
<b>Squash</b>							
<b>Summer</b>	2003	286	7	1,988	tons	588.00	1,168,800
	2002	376	705	265,080	28 lbs	6.28	1,664,700
<b>Winter</b>	2003		Misc.				
	2002	70	604	42,280		8.78	371,200
<b>Strawberries</b>	2003	304	1,410	427,935	12 lbs	11.50	4,921,300
	2002	236	1,501	354,236		10.23	3,623,800
<b>Tomatoes</b>	2003	263	1,675	440,525	20 lbs	6.52	2,872,200
	2002	281	1,458	409,698		5.62	2,303,500
<b>TOTAL</b>	2003	35,216				\$	179,001,900
	2002	35,360					215,412,800

\* Includes: Beets, Endive, Escarole, Garlic, Lettuce-Bulk Shred, Melons-Crenshaw, Onions-Green, Parsley, Peas, Squash-Banana, Squash-Butternut, Other (Riverside, Coachella Districts)



## FIELD AND SEED CROPS

	Year	Harvested Acreage	Production		Unit	Value	
			Per Acre	Total		Per Unit	Total
<b>Cotton</b>							
<b>Short Staple</b>	2003	13,139	3.30	43,359	500 lbs	310.00	13,441,200
	2002	9,091	3.24	29,455		300.00	8,836,500
<b>Seed</b>	2003		1.32	17,343	tons	130.00	2,254,600
	2002		1.22	11,091		130.00	1,441,800
<b>Grain</b>							
<b>Barley</b>	2003	402	2.33	937	tons	114.00	106,800
	2002	216	2.45	529		103.41	54,700
<b>Milo Maize</b>	2003		None		tons		
	2002	332	2.00	664		101.00	67,100
<b>Oat</b>	2003	415	0.95	394	tons	92.00	36,300
	2002	No harvest due to drought					
<b>Wheat</b>	2003	26,987	1.84	49,656	tons	140.00	6,951,900
	2002	5,727	3.00	17,181		135.00	2,319,400
<b>Hay</b>							
<b>Alfalfa</b>	2003	55,558	8.70	483,355	tons	80.50	38,910,000
	2002	58,379	8.80	513,735		91.75	47,135,200
<b>Barley</b>	2003	2,250	2.06	4,635	tons	107.00	495,900
	2002	1,017	1.00	1,017		90.00	91,500
<b>Bermuda Grass</b>	2003	1,779	5.50	9,785	tons	80.00	782,800
	2002	1,481	6.60	9,775		80.00	782,000

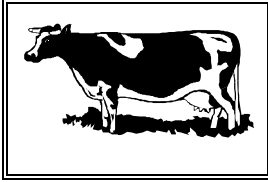


## FIELD AND SEED CROPS

	Year	Harvested Acreage	Production		Unit	Value	
			Per Acre	Total		Per Unit	Total
<b>Hay</b>							
Klein Grass	2003	2,288	9.50	21,736	tons	87.00	1,891,000
	2002	2,421	9.00	21,789		86.00	1,873,900
Oat	2003	2,208	2.74	6,050	tons	105.00	635,200
	2002	1,238	1.82	2,253		96.99	218,500
Sudan	2003	1,491	5.20	7,753	tons	98.00	759,800
	2002	1,347	4.60	6,196		81.00	501,900
Straw-Other	2003	1,007	1.80	1,813	tons	38.00	68,900
	2002	567	1.50	851		30.00	25,500
Timothy Grass	2003	514	3.70	1,902	tons	200.00	380,400
	2002		Misc.				
Miscellaneous*	2003	1,115	1.20	1,338	tons	169.00	226,100
	2002	1,800	13.74	24,732		39.05	965,800
Pasture-Irrigated	2003	15,550		15,550	acres	122.00	1,897,100
	2002	15,500		15,500		122.00	1,891,000
Rangeland	2003	40,000		40,000	acres	5.00	200,000
	2002	40,000		40,000		0.00	-
<b>Silage and Green Chop</b>							
Alfalfa	2003	1,720	31.70	54,524	tons	28.40	1,548,500
	2002	4,256	28.85	122,786		28.67	3,520,300
Barley	2003	345	4.51	1,556	tons	16.00	24,900
	2002	1,430	8.46	12,098		20.07	242,800
Corn	2003	1,488	21.50	31,992	tons	30.20	966,200
	2002	1,744	23.15	40,374		29.31	1,183,400
Oat	2003	508	7.00	3,556	tons	16.00	56,900
	2002		None				
Sorghum	2003	305	17.70	5,399	tons	23.00	124,200
	2002		Misc.				
Sudan	2003	20	20.00	400	tons	15.00	6,000
	2002	90	16.67	1,500		21.80	32,700
Wheat	2003	6,311	10.30	65,003	tons	21.00	1,365,100
	2002		Misc.				
<b>Seed</b>							
Bermuda Grass	2003	1,178	314.00	369,892	lbs	1.52	562,200
	2002	1,029	503.00	517,587		1.50	776,400
<b>TOTAL</b>	<b>2003</b>	<b>176,578</b>				<b>\$</b>	<b>73,692,000</b>
	2002	147,665					71,960,400

\* Includes: Hay-4 Way, Peanuts-Seed, Peanuts-Straw, Safflower

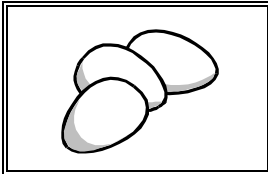




## LIVESTOCK AND POULTRY

	Year	Number of Head	Total Liveweight	Unit	Value	
					Per Unit	Total
Cattle and Calves	2003	2,600	20,100	cwt	38.00	763,800
	2002	10,000	50,000		50.00	2,500,000
Sheep and Lambs	2003	77,100	96,700	cwt	87.00	8,412,900
	2002	59,000	67,180		66.02	4,435,200
Other Livestock*	2003	35,000	350	cwt	440.00	154,000
	2002	260,000	18,200		6.60	120,100
TOTAL	2003				\$	9,330,700
	2002					7,055,300

\*Ducks, Hogs, Rabbits, Squab, Gamebirds



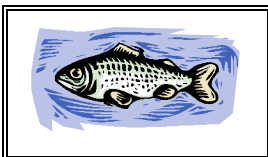
## LIVESTOCK AND POULTRY PRODUCTS

	Year	Production	Unit	Value	
				Per Unit	Total
Eggs*	2003	125,532,000	dozen	0.59	74,063,900
	2002	140,800,000		0.43	60,544,000
Milk**	2003	17,023,245	cwt	11.99	204,108,700
	2002	18,907,000		12.05	227,829,400
Other Products***	2003				405,300
	2002				500,000
TOTAL	2003			\$	278,577,900
	2002				288,873,400

\*Information Supplied by: University of California Cooperative Extension Services.

\*\*Information Supplied by: California Agricultural Statistics Service.

\*\*\*Hides, Manure, and Wool.



## AQUACULTURE

	Year	Production	Unit	Value	
				Per Unit	Total
Carp	2003	200,523	lbs	2.24	449,200
Catfish	2003	923,344	lbs	1.87	1,726,700
Miscellaneous*	2003	3,828,800	lbs	2.73	10,452,600
Tilapia	2003	1,572,914	lbs	2.10	3,303,100
Total	2003	6,525,581		\$	15,931,600
	2002	7,407,983			15,757,600

\* Includes Bass, Goldfish, Trout



## NURSERY STOCK PRODUCTION

	Year	Acres	Production	Unit	Valuation
<b>Ornamental Nursery Stock</b>	<b>2003</b>	<b>3,582</b>	<b>19,776,153</b>	<b>various</b>	<b>146,039,600</b>
	2002	2,730	16,158,792		133,088,900
<b>Cut Flowers and Cut Greens</b>	<b>2003</b>	<b>353</b>	<b>2,656,100</b>	<b>cuttings</b>	<b>1,649,900</b>
	2002	293	2,405,000		1,475,700
<b>Christmas Trees (cut)</b>	<b>2003</b>	<b>24</b>	<b>4,522</b>	<b>each</b>	<b>162,700</b>
	2002	121	3,068		96,900
<b>Turf</b>	<b>2003</b>	<b>3,552</b>	<b>149,615,325</b>	<b>square feet</b>	<b>30,731,100</b>
	2002	3,509	202,170,720		43,800,000
<b>Farm Planting Stock</b>	<b>2003</b>	<b>100</b>	<b>1,862,500</b>	<b>various</b>	<b>27,263,000</b>
	2002	83	583,500		4,612,100
<b>TOTAL</b>	<b>2003</b>	<b>7,611</b>			<b>\$ 205,846,300</b>
	2002	6,736			183,073,600



## APICULTURE

	Year	Production	Unit	Value	
				Per Unit	Total
<b>Honey</b>	<b>2003</b>	<b>1,909,200</b>	<b>lbs</b>	<b>1.25</b>	<b>2,386,500</b>
	2002	1,900,000		1.05	1,995,000
<b>Beeswax</b>	<b>2003</b>	<b>31,820</b>	<b>lbs</b>	<b>1.00</b>	<b>31,800</b>
	2002	47,000		1.00	47,000
<b>Queen Cells</b>	<b>2003</b>	<b>3,000</b>	<b>queens</b>	<b>1.50</b>	<b>4,500</b>
	2002	1,200		1.50	1,800
<b>Fees Collected for Pollination</b>	<b>2003</b>	<b>28,700</b>	<b>colonies</b>	<b>38.25</b>	<b>1,097,800</b>
	2002	20,000		38.00	760,000
<b>Total Colonies</b>	<b>1998</b>	<b>31,820</b>			
	2002	21,000			
<b>TOTAL</b>	<b>2003</b>				<b>\$ 3,520,600</b>
	2002				2,803,800

## DISTRICT VALUATIONS - AGRICULTURAL CROPS

District	1999	2000	2001	2002	2003
Riverside/Corona	\$ 31,464,000	\$ 31,203,800	\$ 49,707,800	\$ 84,200,000	\$ 97,390,900
San Jacinto/Temecula Valley	94,443,000	102,293,100	138,802,600	145,426,200	164,934,800
Coachella Valley	427,605,600	324,729,300	450,695,100	425,631,400	405,575,900
Palo Verde Valley	90,393,100	93,876,000	99,073,100	93,716,800	91,978,200
<b>Total Crop Valuation</b>	<b>643,905,700</b>	<b>552,102,200</b>	<b>738,278,600</b>	<b>748,974,400</b>	<b>759,879,800</b>

## ACREAGE STATISTICS

Crop	1999	2000	2001	2002	2003
Citrus	30,757	30,653	30,011	29,818	23,462
Tree and Vine	29,942	28,405	26,538	28,451	25,175
Vegetable, Melons, Misc.	48,008	45,405	41,738	35,360	35,216
Field and Seed	210,463	163,861	187,045	147,665	176,578
<b>Total Planted Acreage</b>	<b>319,170</b>	<b>268,324</b>	<b>285,332</b>	<b>241,294</b>	<b>260,431</b>

## TOTAL VALUATION - F.O.B.

Crop	1999	2000	2001	2002	2003
Citrus	\$118,236,100	\$114,572,900	\$130,221,100	\$95,402,300	\$84,900,100
Tree and Vine	224,383,600	177,390,100	191,579,100	183,138,900	216,566,200
Vegetable, Melons, Misc.	238,001,400	193,720,100	196,785,100	215,412,800	179,001,900
Field and Seed	64,554,300	66,921,500	80,215,900	71,960,400	73,692,000
Nursery	90,377,000	107,520,300	138,371,300	183,073,600	205,846,300
Apiculture	5,572,000	4,269,200	4,740,000	2,803,800	3,520,600
Aquaculture	16,006,800	17,174,700	15,412,400	15,757,600	15,931,600
<b>Total Crop</b>	<b>757,131,200</b>	<b>681,568,800</b>	<b>757,324,900</b>	<b>767,549,400</b>	<b>779,458,700</b>
Livestock and Poultry	440,230,900	366,992,800	367,583,500	295,928,700	287,908,600
<b>GRAND TOTAL</b>	<b>1,197,362,100</b>	<b>1,048,561,600</b>	<b>1,124,908,400</b>	<b>1,063,478,100</b>	<b>1,067,367,300</b>

## RIVERSIDE COUNTY LEADING AGRICULTURAL VALUATIONS

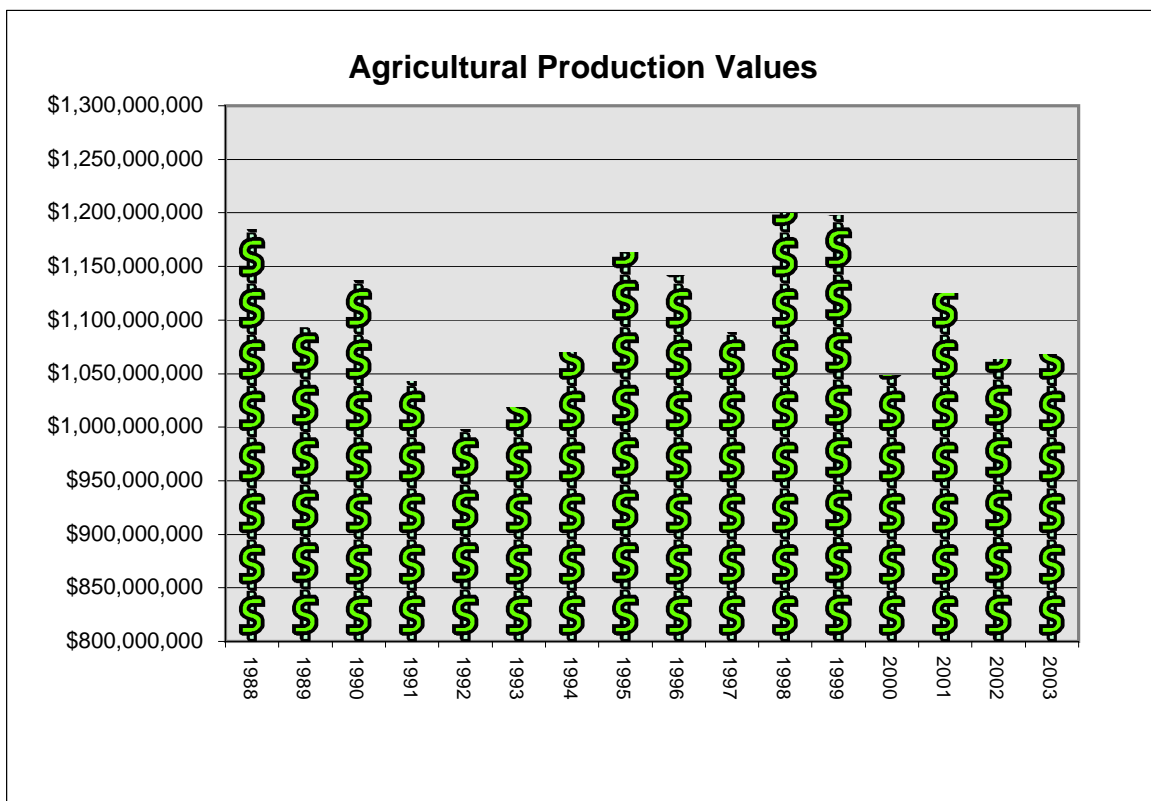
<u>2002</u>		<u>2003</u>		
1	Milk	\$ 227,829,400	1 Nursery	\$ 205,846,300
2	Nursery	183,073,600	2 Milk	204,108,700
3	Grapes, Table	103,836,900	3 Grapes, Table	115,939,900
4	Eggs	60,544,000	4 Eggs	74,063,900
5	Hay, all	50,757,900	5 Avocados	59,842,600
6	Dates	37,580,900	6 Hay, all	43,924,000
7	Avocados	36,426,900	7 Dates	36,596,600
8	Lemons	31,950,300	8 Peppers, Bell	33,192,500
9	Peppers, Bell	30,198,400	9 Grapefruit, all	31,569,400
10	Lettuce, Loose Leaf	26,429,700	10 Lemons	26,389,900
11	Grapefruit, All	25,504,800	11 Melons, all	25,776,000
12	Oranges, Navel	17,318,100	12 Aquaculture	15,931,600
13	Lettuce, Romaine	16,913,000	13 Cotton, all	15,695,800
14	Carrots	15,961,000	14 Oriental Vegetables	14,644,000
15	Aquaculture Products	15,757,600	15 Lettuce, Loose Leaf	13,285,900
16	Broccoli	14,145,100	16 Lettuce, Romaine	12,239,400
17	Oriental Vegetables	13,471,700	17 Broccoli	11,751,800
18	Watermelons	11,982,700	18 Oranges, Navel	10,650,500
19	Potatoes	11,774,800	19 Carrots	9,331,900
20	Oranges, Valencia	10,641,000	20 Sheep & Lambs	8,412,900

## CALIFORNIA'S LEADING AGRICULTURAL COUNTIES BY TOTAL VALUE OF PRODUCTION

<u>RANK</u>	<u>2000</u>		<u>2001</u>		<u>2002</u>	
	<u>COUNTY</u>	<u>VALUE</u>	<u>COUNTY</u>	<u>VALUE</u>	<u>COUNTY</u>	<u>VALUE</u>
1	Fresno	3,425,926,000	Tulare	3,493,010,000	Fresno	3,418,788,000
2	Tulare	3,068,063,000	Fresno	3,218,681,000	Tulare	3,201,722,000
3	Monterey	2,923,393,000	Monterey	2,746,251,000	Monterey	2,812,073,000
4	Kern	2,213,200,000	Kern	2,254,322,000	Kern	2,586,437,000
5	Merced	1,538,545,000	Merced	1,703,044,000	Merced	1,730,726,000
6	San Joaquin	1,348,724,000	San Joaquin	1,389,889,000	Stanislaus	1,367,971,000
7	San Diego	1,254,389,000	Stanislaus	1,353,300,000	San Joaquin	1,343,818,000
8	Stanislaus	1,197,302,000	San Diego	1,289,708,000	San Diego	1,297,280,000
9	<b>Riverside</b>	1,048,590,000	<b>Riverside</b>	1,124,929,000	Imperial	1,224,109,000
10	Ventura	1,047,128,000	Ventura	1,053,714,000	Ventura	1,161,139,000
11					<b>Riverside</b>	1,063,521,000

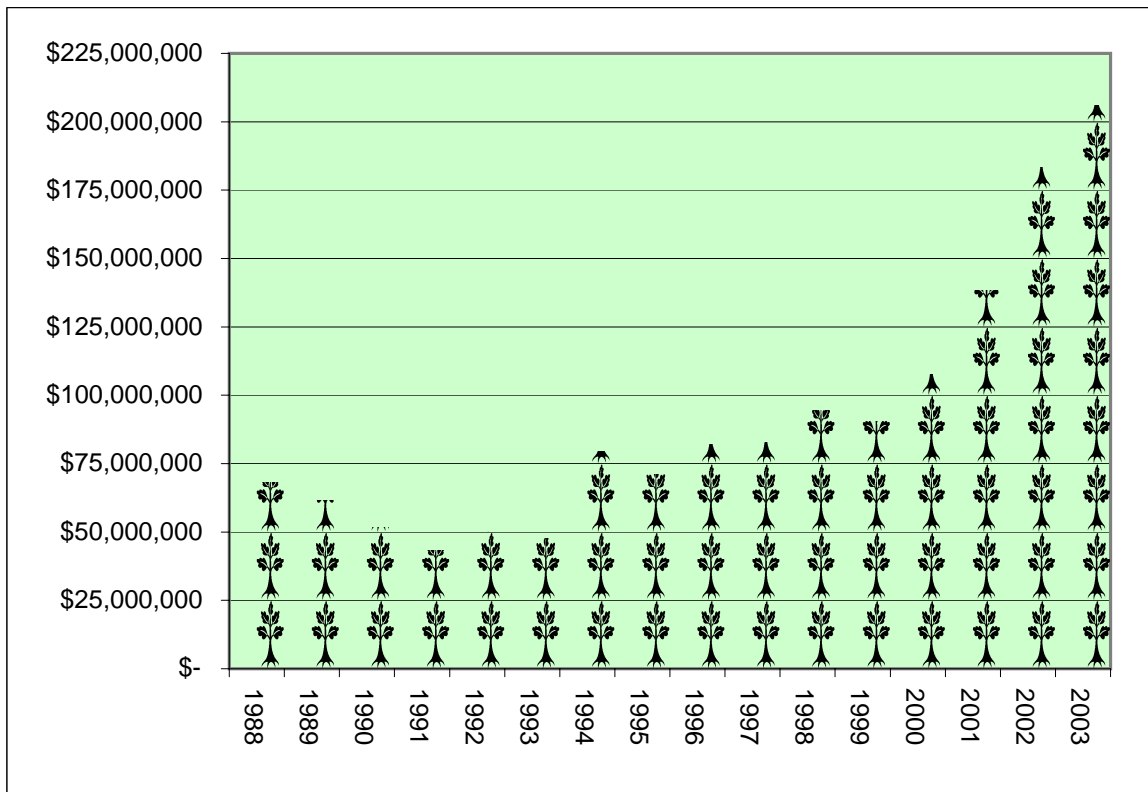
# RIVERSIDE COUNTY AGRICULTURAL PRODUCTION VALUES 1988-2003

<u>YEAR</u>	<u>VALUE</u>	<u>STATE RANK</u>
1988	\$1,184,000,300	4
1989	\$1,092,781,100	5
1990	\$1,137,174,100	5
1991	\$1,042,326,900	6
1992	\$997,653,500	7
1993	\$1,018,641,000	9
1994	\$1,069,323,000	8
1995	\$1,163,430,300	7
1996	\$1,141,819,800	8
1997	\$1,087,920,000	9
1998	\$1,199,506,700	8
1999	\$1,197,362,000	9
2000	\$1,048,561,600	9
2001	\$1,124,908,400	9
2002	\$1,063,478,000	11
2003	\$1,067,367,300	



# NURSERY PRODUCTION VALUATION 1988-2003

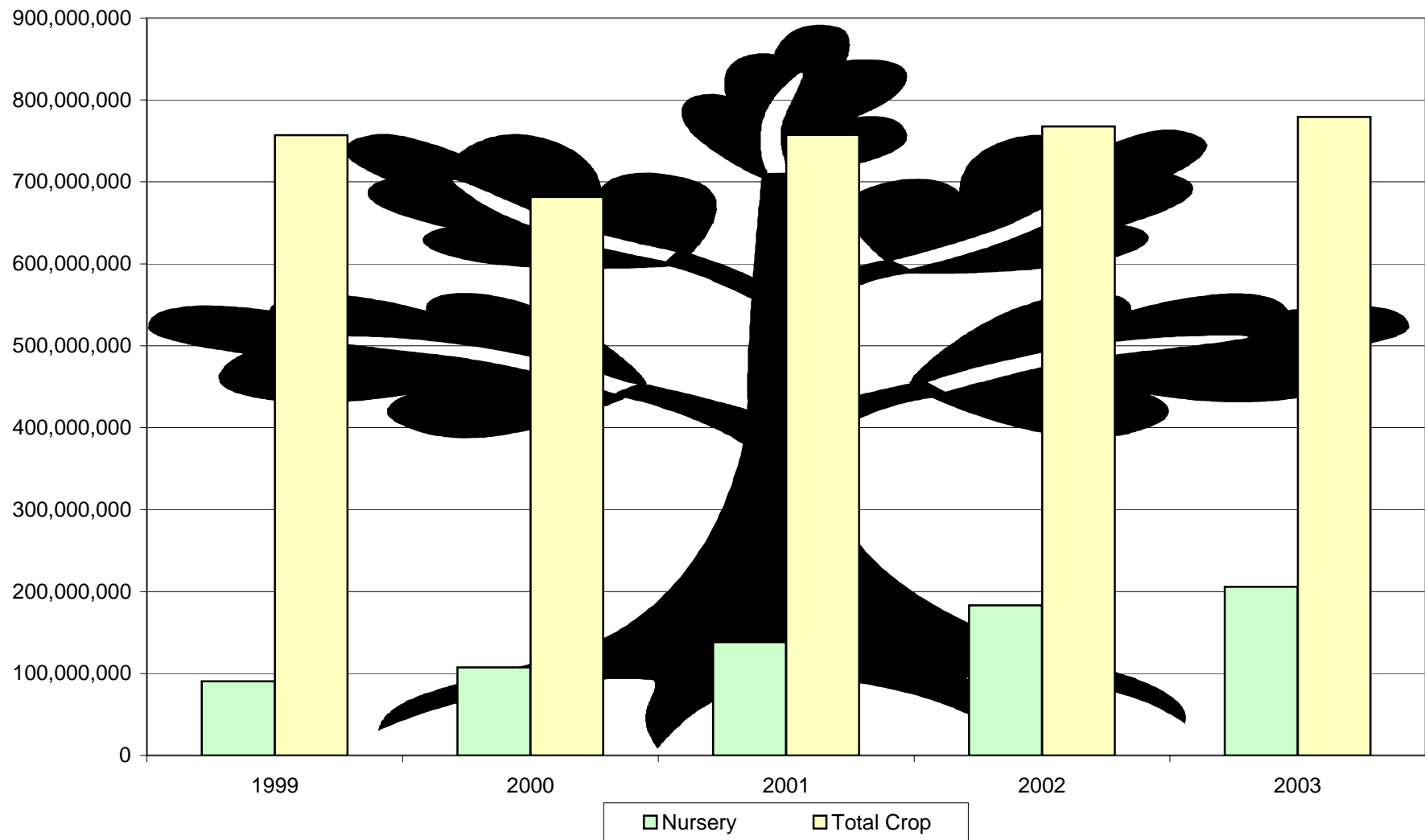
<u>Year</u>	<u>Value</u>	<u>Acres</u>	<u>County Rank</u>	<u>% Total Value</u>
1988	68,231,600	2,961	4	5.8
1989	61,579,400	3,598	4	5.6
1990	51,531,900	2,298	6	4.5
1991	43,144,600	2,112	7	4.1
1992	50,256,700	1,768	5	5.0
1993	47,550,700	2,594	7	4.5
1994	79,537,200	3,678	3	7.4
1995	71,169,100	3,590	4	6.1
1996	81,942,600	3,829	4	7.2
1997	82,827,400	4,355	4	7.6
1998	94,549,900	5,346	3	7.9
1999	90,377,000	4,517	3	7.5
2000	107,520,300	5,685	2	10.3
2001	138,371,300	6,330	2	12.3
2002	183,073,600	6,736	2	17.2
2003	205,846,300	7,611	1	19.3



## 2003 Million Dollar Commodities

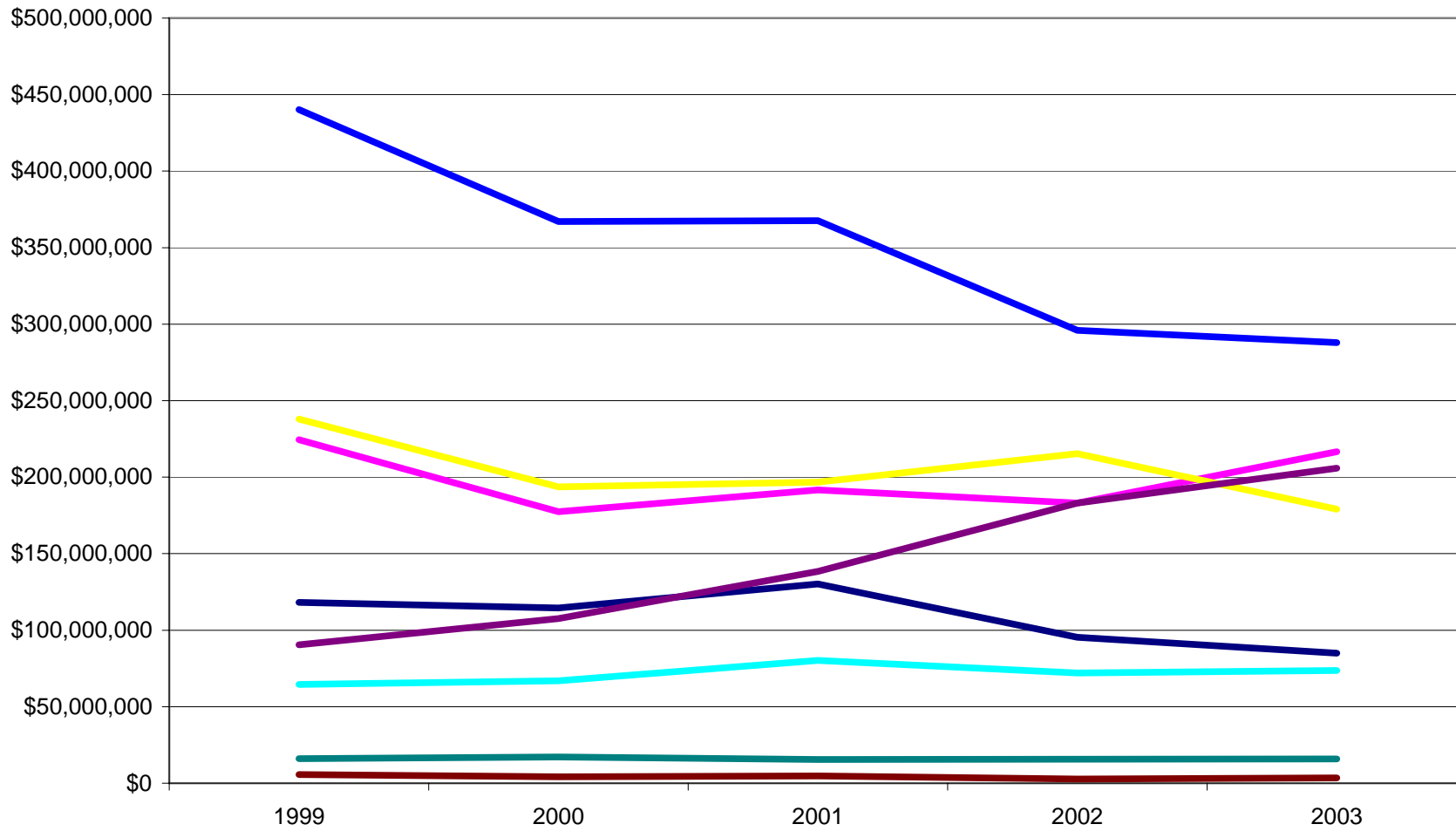
<u>Rank</u>	<u>Commodity</u>	<u>Value</u>
1	Nursery	205,846,300
2	Milk	204,108,700
3	Grapes, Table	115,939,900
4	Eggs	74,063,900
5	Avocados	59,842,600
6	Hay, all	43,924,000
7	Dates	36,596,600
8	Peppers, Bell	33,192,500
9	Grapefruit, all	31,569,400
10	Lemons	26,389,900
11	Melons, all	25,776,000
12	Aquaculture	15,931,600
13	Cotton, all	15,695,800
14	Oriental Vegetables	14,644,000
15	Lettuce, Loose Leaf	13,285,900
16	Lettuce, Romaine	12,239,400
17	Broccoli	11,751,800
18	Oranges, Navel	10,650,500
19	Melons, Canteloupe	9,331,900
20	Carrots	9,065,200
21	Sheep & Lambs	8,412,900
22	Grain, all	7,095,000
23	Watermelons	6,952,600
24	Potatoes	6,636,200
25	Beans, Green	6,498,800
26	Melons, Honeydew	5,979,100
27	Oranges, Valencia	5,834,800
28	Tangerines, all	5,726,800
29	Cauliflower	5,629,500
30	Artichokes	5,327,500
31	Spinach	5,068,800
32	Corn, Sweet	5,041,900
33	Strawberries	4,921,300
34	Citrus, misc.	4,728,700
35	Forage/Fodder, all	4,091,800
36	Apiculture	3,520,600
37	Grapes, Wine	3,263,800
38	Spices	3,051,700
39	Melons, misc.	2,982,200
40	Tomatoes, mkt.	2,872,200
41	Lettuce, Head	2,545,900
42	Celery	2,090,700
43	Onions, Dry	1,983,700
44	Pasture, irrigated	1,897,100
45	Eggplant	1,624,100
46	Squash, Summer	1,168,800

### Contribution of Nursery Production to Overall Crop Value 1999-2003





## Total Agricultural Production Valuation 1999-2003



■ Citrus   
 ■ Tree and Vine   
 ■ Vegetable, Melons, Misc.   
 ■ Field and Seed   
 ■ Nursery   
 ■ Apiculture   
 ■ Aquaculture   
 ■ Livestock and Poultry

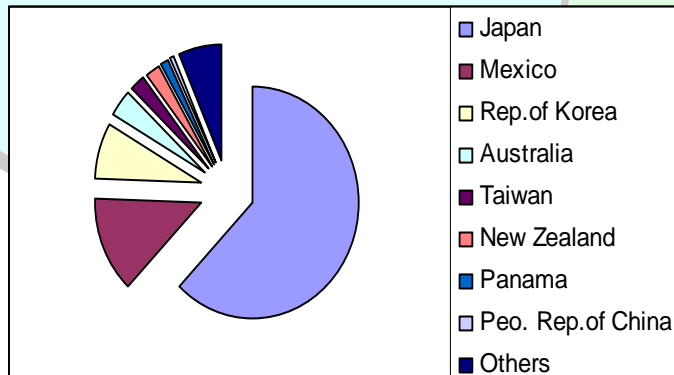
# PHYTOSANITARY EXPORT CERTIFICATION – 2003

## Export Countries

Australia	El Salvador	Malaysia	Singapore
Austria	France	Mexico	Spain
Bahamas	Germany	Morocco	Sri Lanka
Bangladesh	Ghana	Netherlands	St. Lucia
Belgium	Guatemala	New Zealand	Suriname
Belize	Honduras	No. Mariana Islands	Switzerland
Burkina Faso	India	Oman	Taiwan
Canada	Indonesia	Panama	Thailand
Chile	Italy	People's Rep. of China	Trinidad & Tobago
Colombia	Jamaica	Peru	Turkey
Costa Rica	Japan	Philippines	United Arab Emirates
Dominican Republic	Kuwait	Republic of Korea	United Kingdom
Ecuador	Lebanon	Saudi Arabia	Vietnam

## Commodities Certified

Alfalfa Hay	Celery	Date Palm Offshoots	Onion Seed
Artichokes	Celery Seedlings	Dates	Peppers
Avocados	Citrus Budwood	Dried Flowers	Pepper Seedlings
Bean Seed	Citrus Fruit	Eggplant Seedlings	Radish Seeds
Broccoli	Citrus Leaves	Grapes	Watermelons
Cantaloupes	Citrus Seedlings	Honeydew Melons	
Carrots	Corn	Lettuce	
Cauliflower	Cottonseed	Mangos	
Cauliflower Seedlings	Cottonseed Hulls	Nursery Stock	



# SUSTAINABLE AGRICULTURE

## ORGANIC FARMING

81 Organic producers registered in Riverside County.

### PEST DETECTION (Commercial and Urban)

<u>Activity</u>	<u>Hours</u>
Commercial Crops	181.0
Public Contact	36.5
Special Surveys:	
Tristeza (Residential)	28.0
Citrus Leaf Miner	64.5
Scientific Evaluation Trapping	1222.6
Red Imported Fire Ant	8882.5
Citrus Tristeza Indexing (Coachella Valley)	<u>Numbers</u>
Commercial	
Properties tested	51
Acres sampled	1106
Samples tested biochemically	7034
“Positive” samples	0
Residential	
Properties tested	100
Trees surveyed	100
Samples tested biochemically	100
“Positive” samples	1

### PEST DETECTION (Exotic Insects)

<u>Pest</u>	<u>Trap Servicings</u>
European Corn Borer	180
Gypsy Moth	49
Khapra Beetle	74
Medfly (Grapes, Citrus)	3,686

### PEST EXCLUSION (Incoming plant shipments)

<u>Units profiled</u>	<u>Units inspected</u>	<u>Rejections</u>
2,938	1,713	24

### PEST ABATEMENT

<u>Pest</u>	<u>Properties</u>
California Red Scale	4
Sting Nematode	8
Citrus Tristeza Virus	1
Glassy-winged sharpshooter	1
Abandoned vineyard	2

## BIOLOGICAL CONTROL OF WEEDS

<u>Pest</u>	<u>Control Agent</u>
Yellow starthistle	<i>Bangasternus orientalis</i> <i>Eustenopus villosus</i>

## BIOLOGICAL CONTROL OF INSECTS AND SNAILS

<u>Pest</u>	<u>Control Agent</u>
Black scale	<i>Metaphycus elvulus</i>
Brown soft scale	<i>Metaphycus uteolus</i>
California red scale	<i>Aphytis melinus</i>
Citrus mealybug	<i>Cryptolaemus montrouzieri</i>
Cottony cushion scale	<i>Encarsia sp.</i> <i>Cryptochaetum iceryae</i>
Eucalyptus longhorned borer	<i>Avetianella longoi</i> <i>Jarra phoracantha</i>
Mosquitoes	<i>Syngaster lepidus</i> <i>Aedes vexans</i> <i>Culex quinquefasciatus</i> <i>Bacillus thur. israelensis</i> <i>Culex tarsalis</i> <i>Gambusia affinis</i> <i>Psorophora columbiae</i> <i>Psytalia concolor</i>
Olive Fruit fly	<i>Galendromus annectens</i>
Persea mite	<i>Galendromus helveolus</i> <i>Galendromus pilosus</i> <i>Psyllaephagus bliteus</i>
Red gum lerp psyllid	<i>Phytoseiulus persimilis</i>
Two spotted spider mite	<i>Galendromus occidentalis</i> <i>Cryptolaemus montrouzieri</i>
Vine mealybug	<i>Ametadoria harrisinae</i>
Western grapeleaf skeletonizer	<i>Apanteles harrisinae</i>
Woolly whitefly	<i>Amitus spiniferus</i> <i>Cales noacki</i>
Brown garden snail	<i>Rumina decollata</i>

## OTHER

Enforcement of County ordinances to control Lettuce Mosaic Virus, agricultural grading, land application of manure and biosolids, cotton plowdown, blowing dust, and beekeeping.

## **STAFF MEMBERS – 2003**

### **Agricultural Commissioner/Sealer of Weights and Measures**

John Snyder

### **Assistant Agricultural Commissioner**

Dustin Wiley

### **Deputy Agricultural Commissioners/Sealers**

Bill Oesterlein

Bill Tracy

Vacant (2)

### **Supervising Agricultural & Standards Investigators**

Don Domenigoni

Bob Mulherin

Gursewak Sidhu

Sue Weber

### **Agricultural & Standards Investigators**

Rick Allert  
Jennifer Chandler  
Dia Elseewi  
Tom Finan  
Julius Francisco  
Erin Freeman  
Dean Gottlieb  
Charles Hardesty

Tom Hought  
Charles Kregl  
Michael Lahti  
Stuart Lease  
Arturo Lomeli  
Debbie May  
Dennis Miller

Victor Miranda  
Keith Selnick  
Richard Shaffer  
Hugo Soto  
Michele Tracy  
Lily Vargas  
Tom Vizthum  
Lena Wages

### **Weights and Measures Inspector**

Doug Simmons

### **Agricultural Inspectors**

Steve Bennett  
Mike Dishman  
Laura Doughty

Brad Eldridge  
James Holland  
Steve Oliver

Angel Orozco  
Mike Madiel  
Gene White

### **Clerical Support Staff**

Camille Alexen  
Debbie Boyer  
Elisa Monteil  
Cynthia Ramos

Billie Seale  
Johanna Starks  
Patrice Wyatt